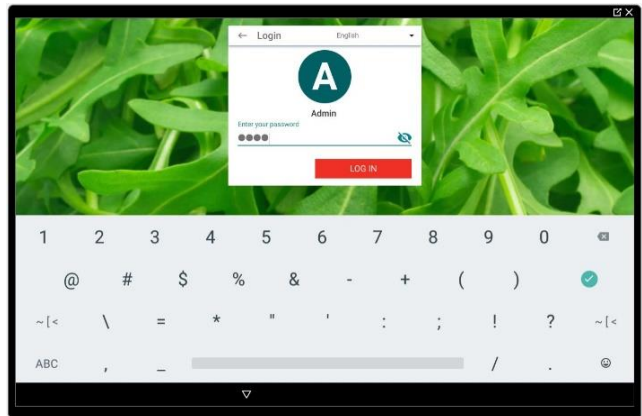
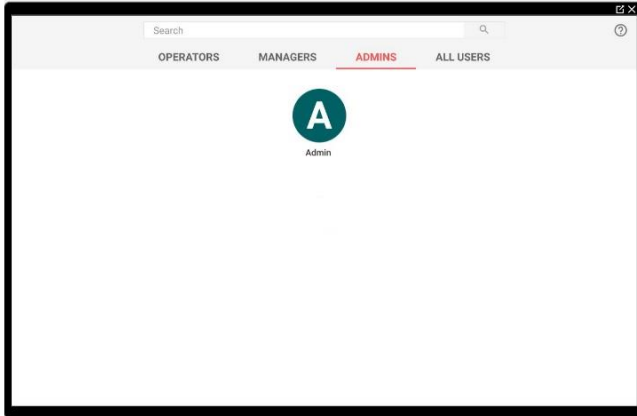
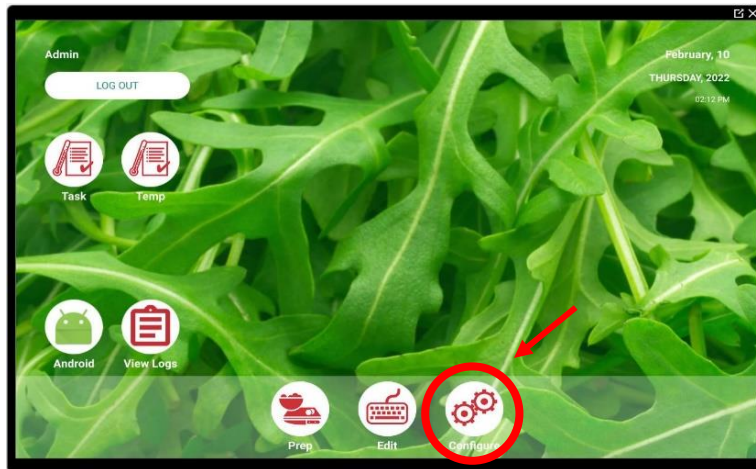


Instructions on how to edit the *Prepared By* address on your retail labels.

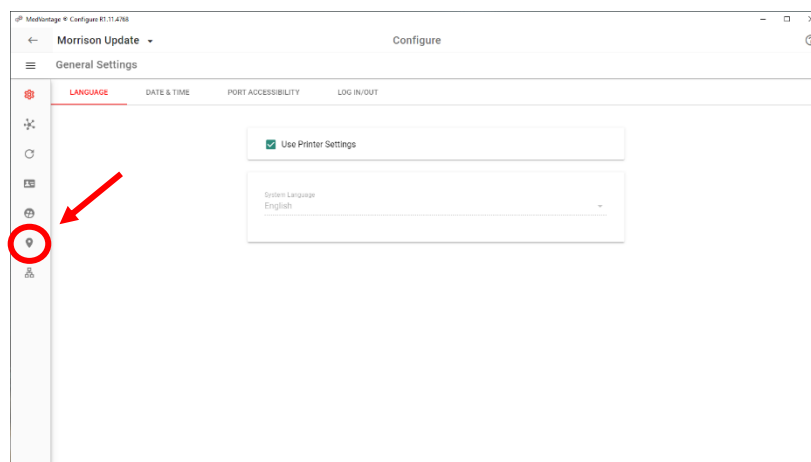
1. On your FreshDate 3, log in as an Admin. The default password is 1234.



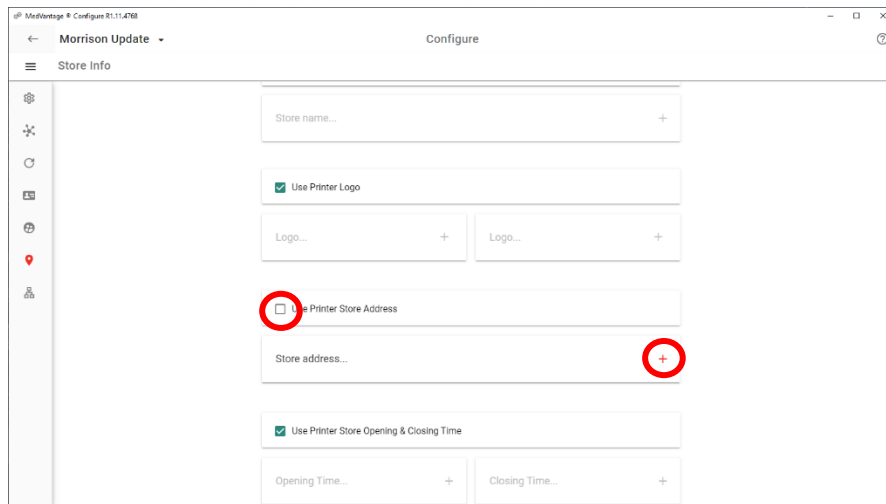
2. Click on Configure.



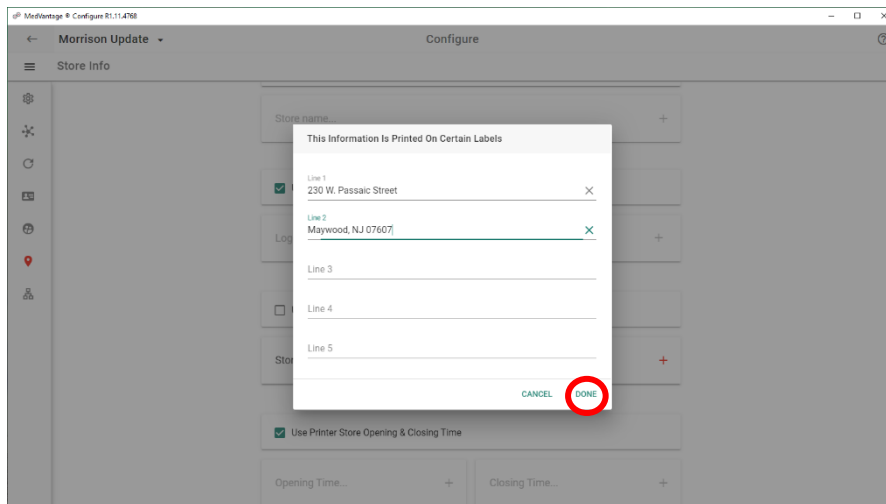
3. Click on the Store Information Icon.



4. Uncheck Use Printer Store Address. Click "+".



5. Type in your location's address. Click Done.



6. Your labels will now print your store information.



Phone: 201-587-9100 Email: support@medvantage.org