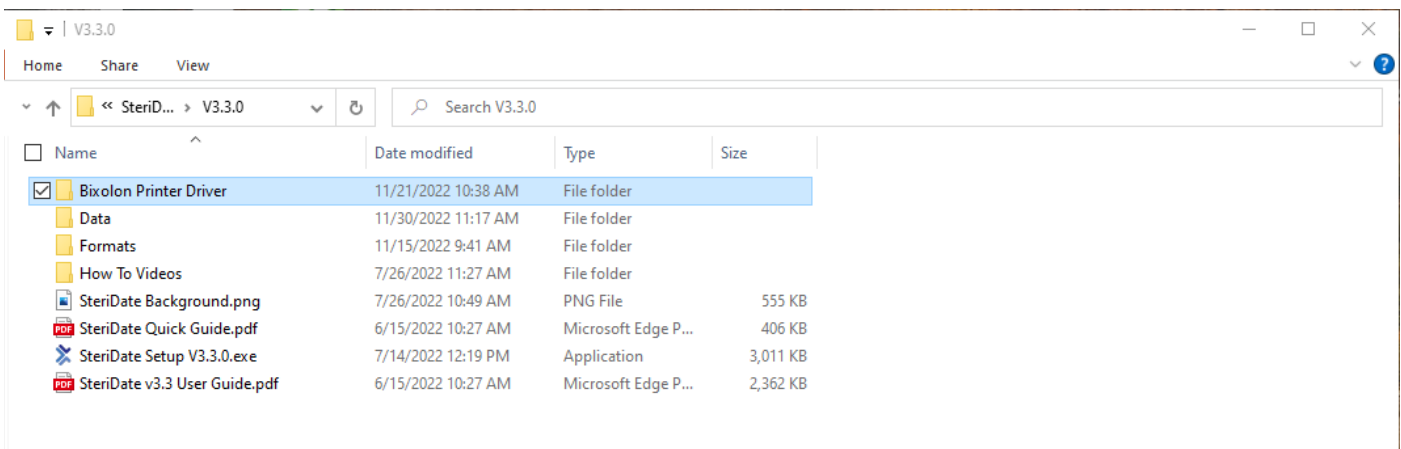
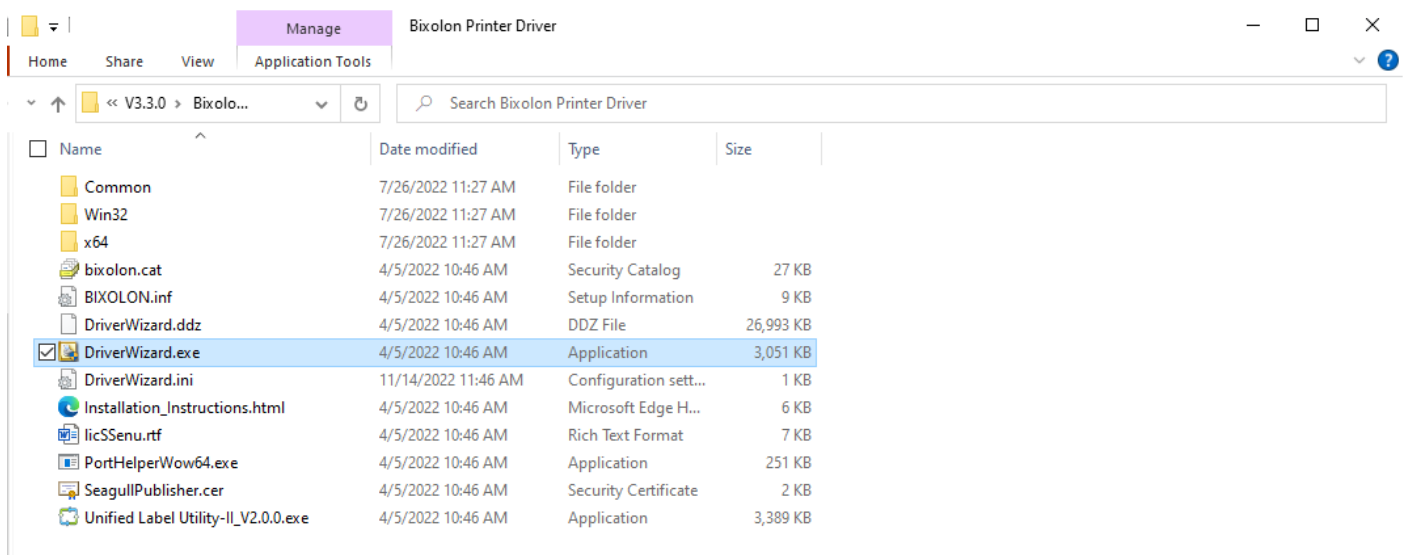


The following file can be found on your MedVantage USB drive that you received with your SteriDate Purchase. If you do not have this USB, please contact MedVantage Support.

## 1. Select the folder, “Bixolon Printer Driver”.



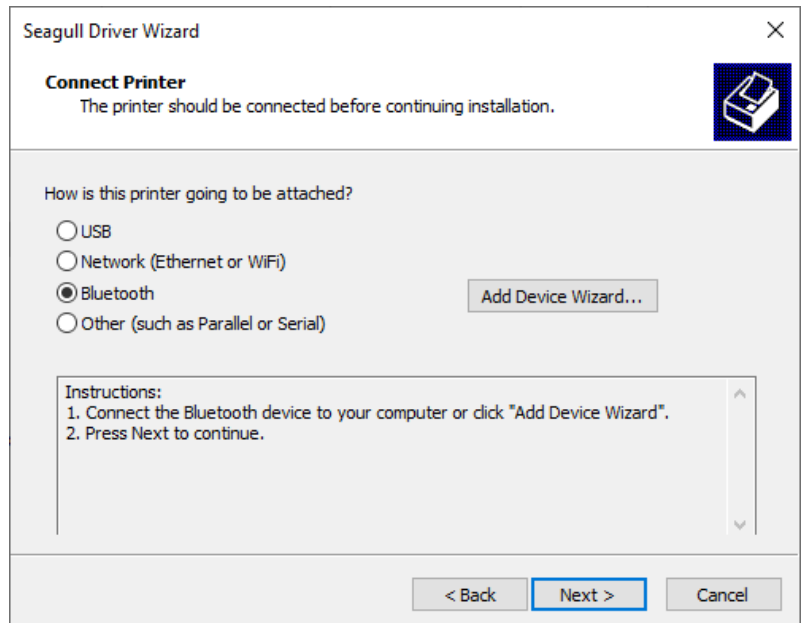
## 2. Select the application, “DriverWizard.exe”.



3. Select "Install Printer Drivers". Click Next.



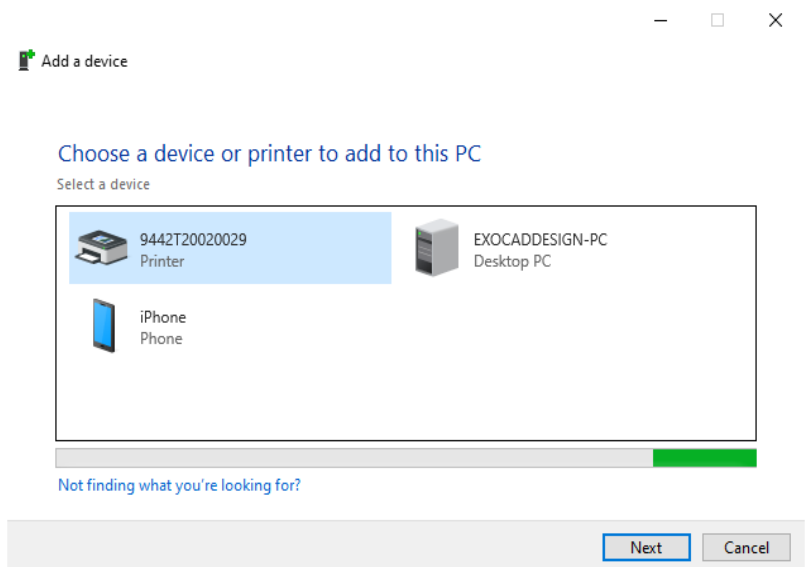
4. Select "Bluetooth" and click "Add Device".



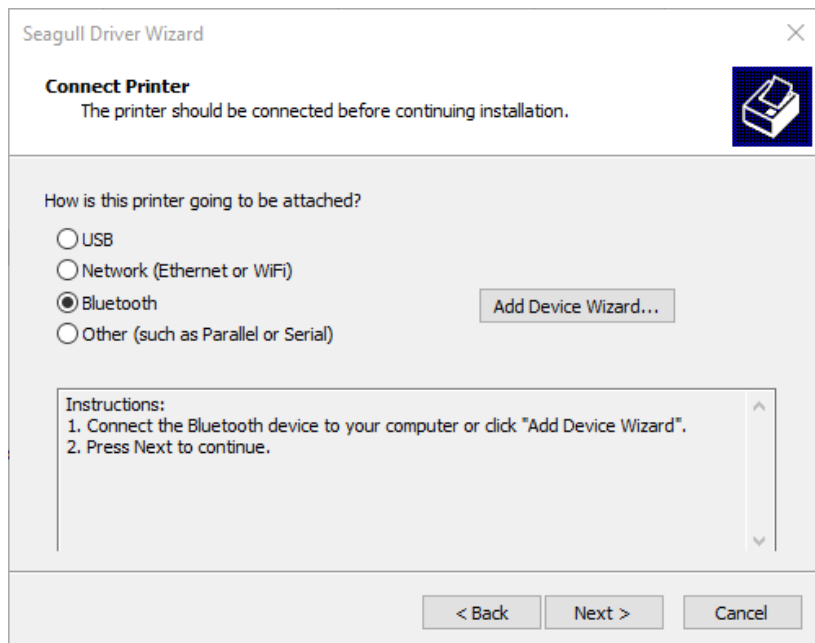
5. Select the printer's serial number.

\*The serial number is located on the bottom of the printer\*

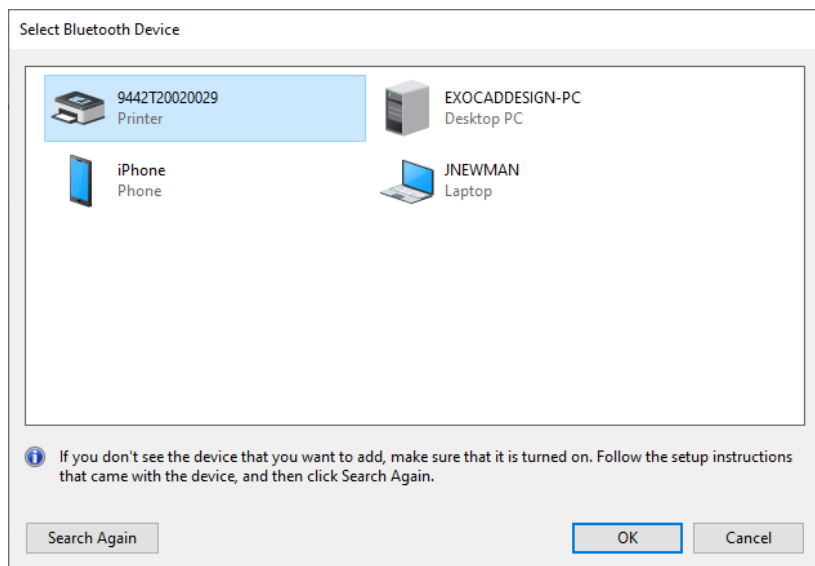
Click Next.



6. You will be taken back to the Connect Printer screen. Click Next.



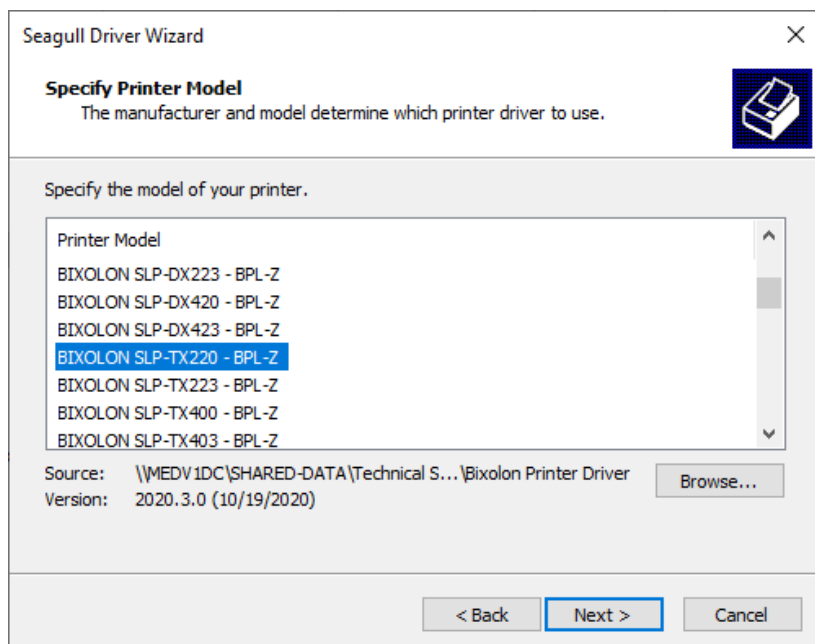
7. Select the printer's serial number and click OK.



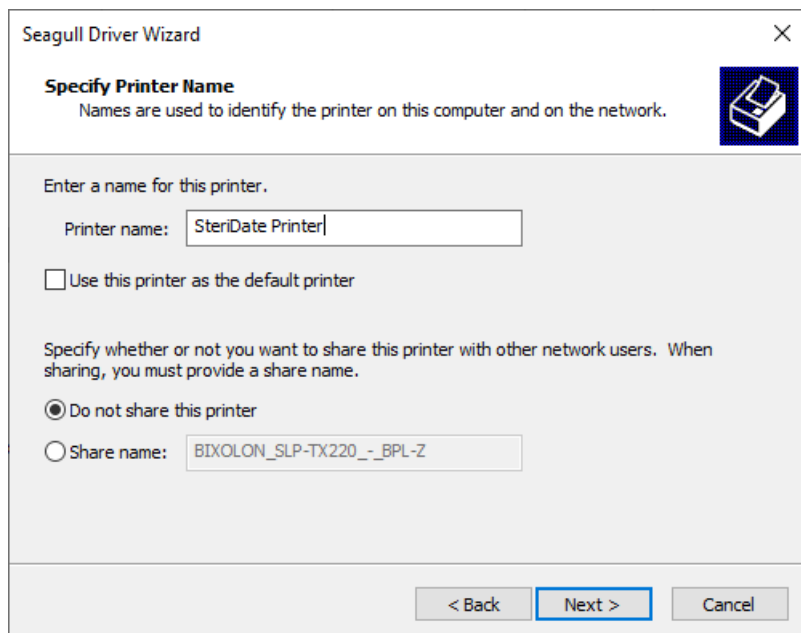
8. Select the printer model :

- **BIXOLON SLP-TX220-BPL-Z**

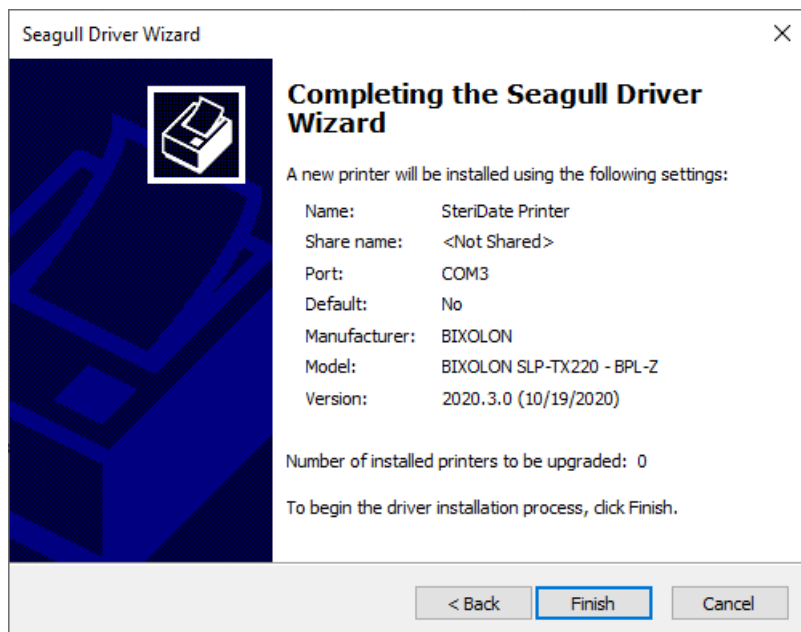
Click Next.



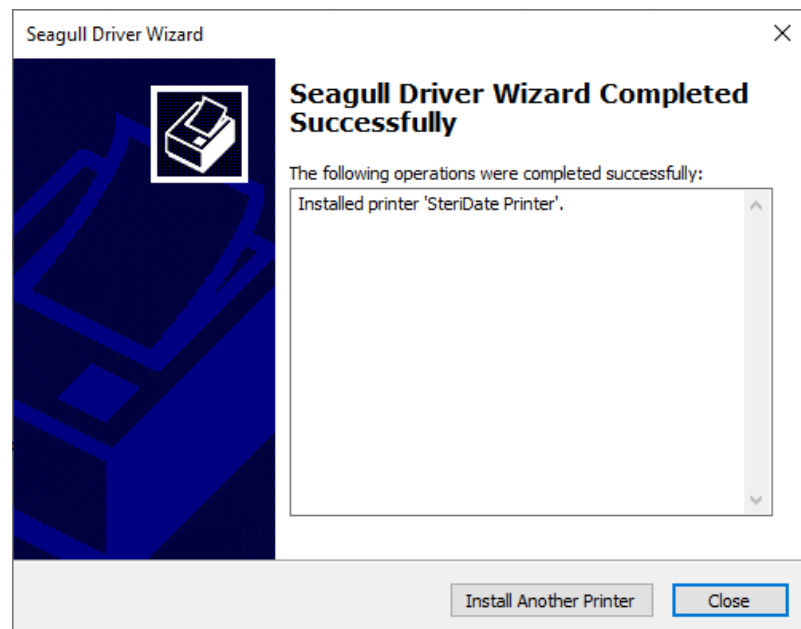
9. Change the printer name as preferred.  
Uncheck "Use this printer as the default printer".  
Click Next.



10. Click Finish.

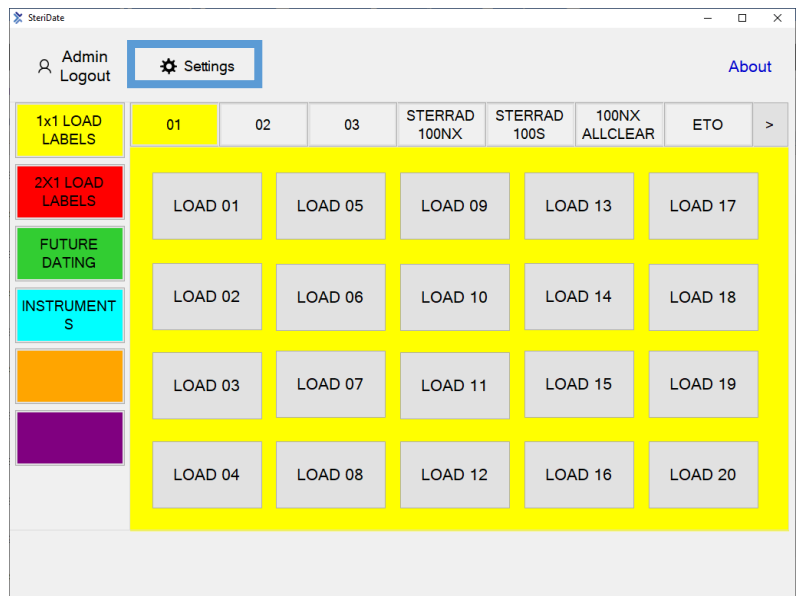


11. You will see a completed message.  
Click Close.

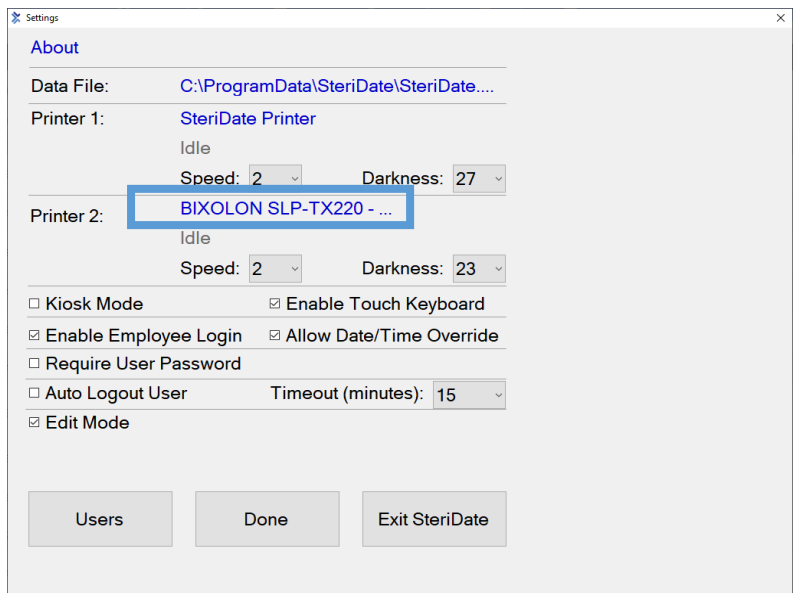


12. Log in as an Admin user and go to Settings.

Default Password: 1234



13. Click on the printer name.



14. Select your new printer from the drop down list. Click OK and then click Done.

