

# Sterilization Labeling System



## User Guide

# BEFORE YOU START

## About This Document

The SteriDate2 Labeling System is available in two options:

- SteriDate2 Stand-Alone – For use as a self-service kiosk
- SteriDate2 for PC – For use on a PC workstation

This document contains easy to follow instructions on how to setup, operate and maintain both systems. We suggest reviewing all its sections before starting.

## Proprietary Statement

The SteriDate software and this manual are proprietary products of MedVantage Inc. and are protected by United States and foreign copyright laws. The manual is intended solely for the information and use of parties setting up, operating, and maintaining the system described herein and may not be used, reproduced, or disclosed to any other parties for any other purpose without the express written permission of MedVantage, Inc.

## Liability Disclaimer

MedVantage takes steps to ensure that it's published specifications and manuals are correct; however, errors do occur. MedVantage reserves the right to correct any such errors and disclaims liability resulting therefrom.

## Data Backup

MedVantage is not responsible for any loss of data entered into the system. We suggest using the Backup tool found under Windows Settings. The backup should include the folder containing the SteriDate data files and the folder where the SteriDate application is installed.

## Product Improvements

Continuous improvement of products is a policy of MedVantage. All specifications and designs are subject to change without notice.

## Limitation of Liability

In no event shall MedVantage or anyone else involved in the creation, production, or delivery of the accompanying product (including hardware and software) be liable for any damages whatsoever (including, without limitation, consequential damages including loss of business profits, business interruption, or loss of business information) arising out of the use of, the results of use of, or inability to use such product, even if MedVantage has been advised of the possibility of such damages. Some jurisdictions do not allow the exclusion or limitation of incidental or consequential damages, so the above limitation or exclusion may not apply to you.

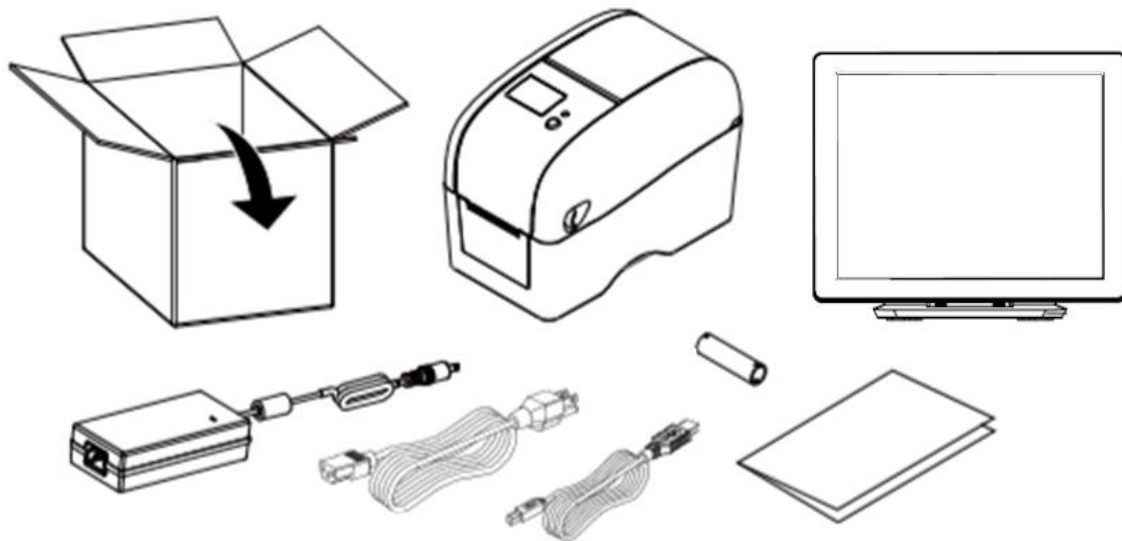
# TABLE OF CONTENTS

Before You Start .....	2
Table of Contents .....	3
1. Overview.....	4
1.1 Unpacking.....	4
1.2 Terminal Overview .....	5
1.3 Printer Overview.....	6
2. Set Up .....	7
2.1 Setting Up the Terminal.....	7
2.2 Setting Up the Printer(s).....	7
2.3 Pairing a Bluetooth Printer .....	8
2.4 Installing the Printer Drivers.....	9
2.5 Installing the SteriDate Software .....	12
2.6 Installing Data Files.....	13
2.7 About Users.....	14
2.8 Adjusting the Settings.....	15
2.9 Managing Users.....	16
2.10 Adjusting Category Properties.....	17
3. Operation.....	18
3.1 Loading Labels .....	18
3.2 Loading the Ribbon.....	19
3.3 Starting the System .....	20
3.4 Printing Load Labels.....	21
3.5 Printing Instrument Labels .....	22
3.6 Printing Loaner Tray Labels .....	23
3.7 Creating New Labels.....	24
4. Maintenance.....	25
4.1 Cleaning Head .....	25
4.2 Cleaning Sensors, Roller and Paper Path.....	26
5. Troubleshooting.....	27
6. Media Calibration .....	28
7. Label Formats .....	29
8. Label Data Sources .....	38
9. About SteriDate Labels .....	39
10. Technical Support .....	40

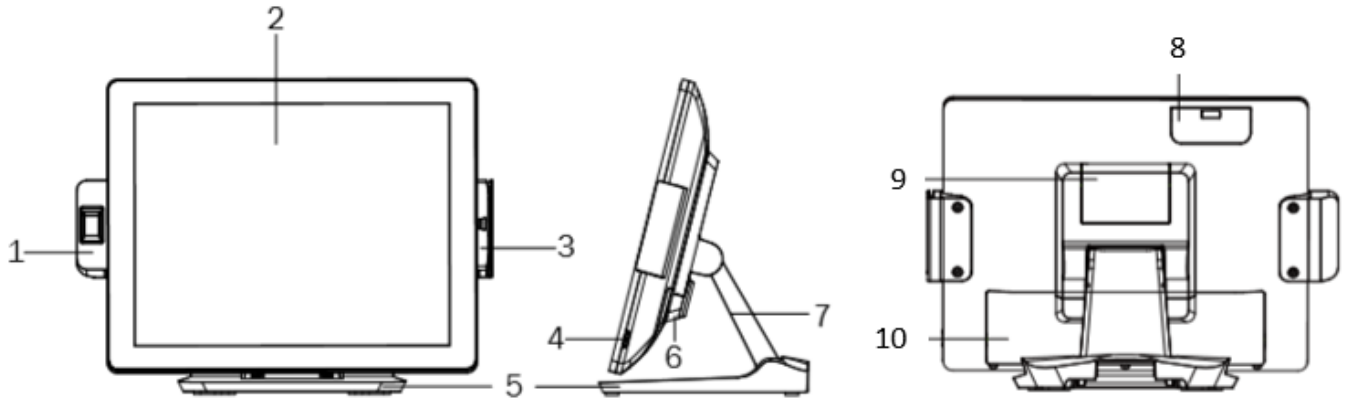
# 1. OVERVIEW

## 1.1 Unpacking

- One Printer with USB Cable, Power Supply and Power Cord (2<sup>nd</sup> Printer Optional)
- One Terminal with Power Supply and Power Cord (SteriDate2 Stand-Alone only)
- One VESA Wall Mount (Optional)
- One Cable Management Sleeve
- One USB Flash Drive with SteriDate software (SteriDate for PC only)
- This User Guide



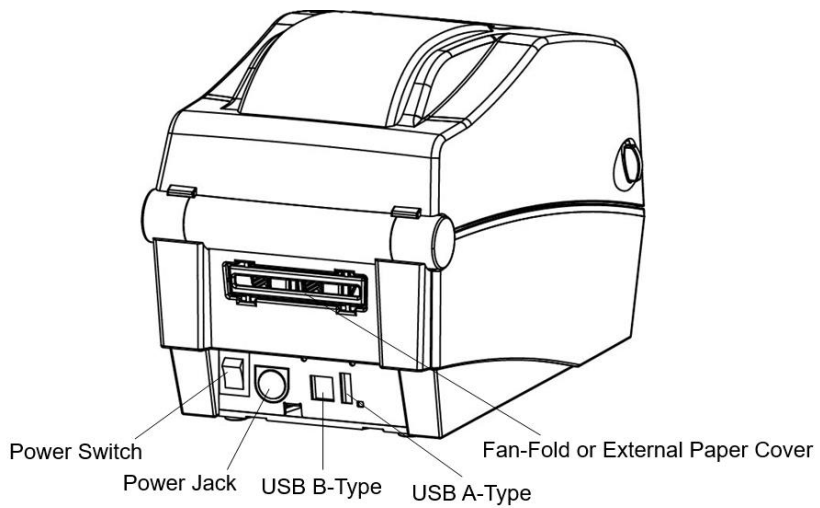
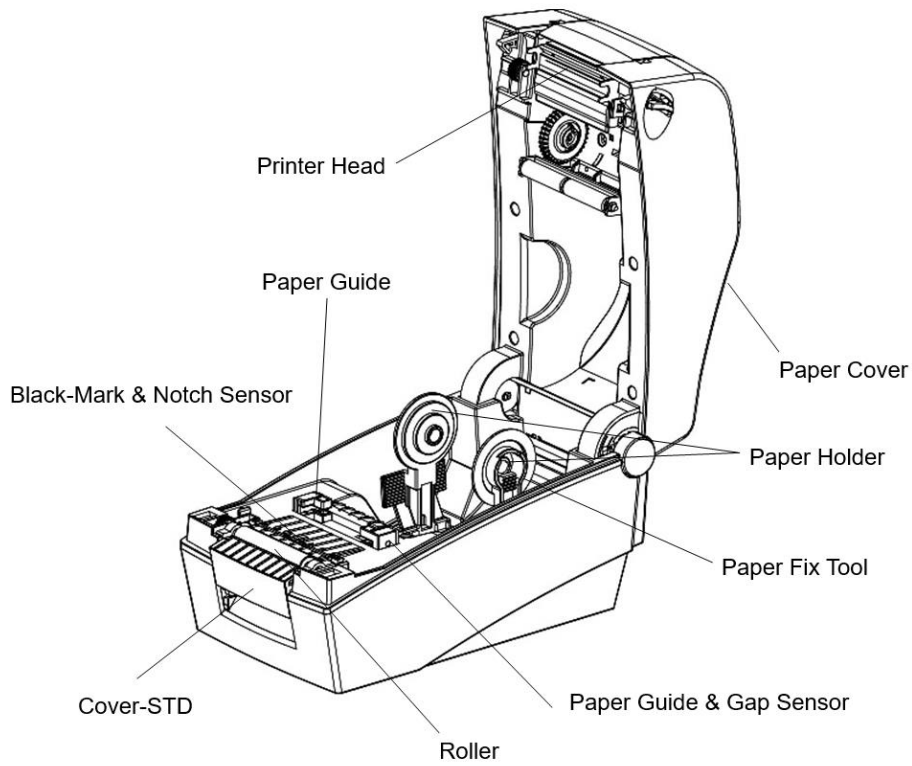
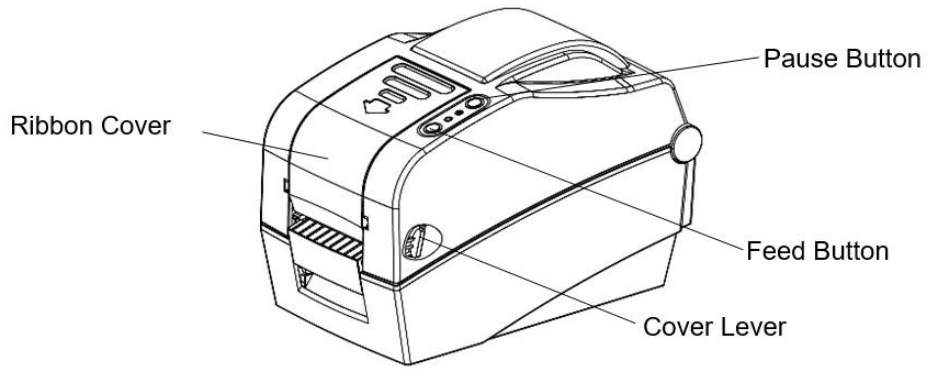
## 1.2 Terminal Overview



No.	Description
1	Fingerprint (option)
2	Touch screen
3	Magnetic Stripe Reader (option)
4	Power button
5	Stand

No.	Description
6	VESA bottom cover
7	Stand front cover
8	HDD Cover
9	VESA top cover
10	Cable & I/O ports cover

# 1.3 Printer Overview



## 2. SET UP

### 2.1 Setting Up the Terminal

1. Place the terminal on a flat, secure surface, or VESA mount.
2. To VESA mount the terminal with its articulating stand, attach the VESA mount to the bottom of the stand.
3. To VESA mount the terminal flush to the wall, slide the VESA bottom cover outwards, loosen the thumb screw and slide the stand down to release it, then attach the VESA mount to the back of terminal.
4. Plug the power cord into the power supply.
5. Plug the power cord into a properly grounded power strip or outlet.



### 2.2 Setting Up the Printer(s)

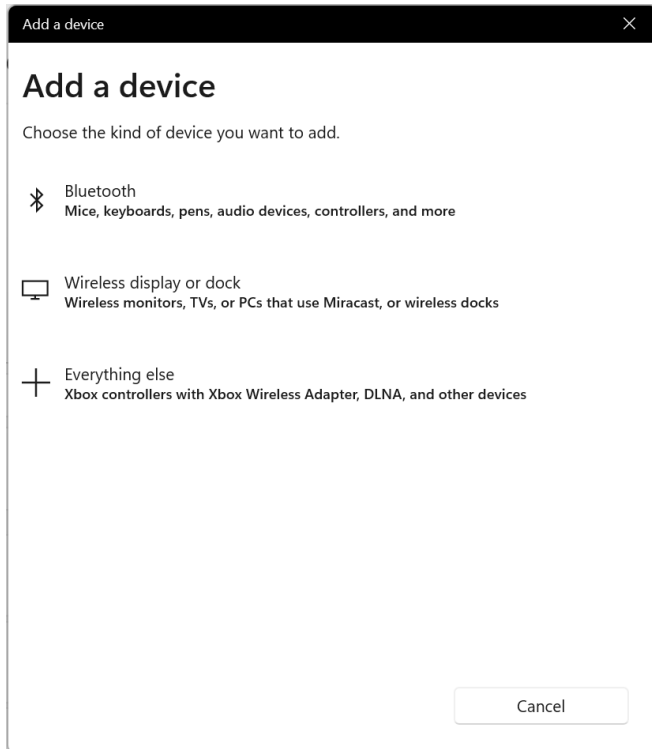
1. Place the printer on a flat, secure surface.
2. To setup as a USB printer, connect the USB cable labeled **P1** from the terminal to the USB port on the back of the printer labeled **P1**.
3. Make sure the power switch is set to **OFF**.
4. Plug the power supply into the printer.
5. Plug the power cord into the power supply.
6. Plug the power cord into a properly grounded power strip or outlet.
7. Set the power switch to **ON**.
8. Repeat these steps to connect a second printer labeled **P2**.



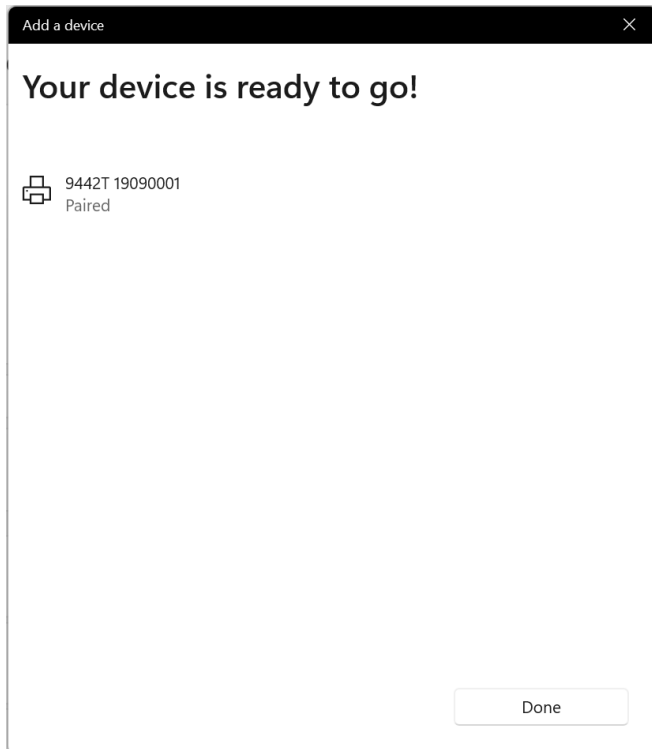
## 2.3 Pairing a Bluetooth Printer

**Note:** On the SteriDate Stand-Alone system, the printers and their drivers come pre-installed.

1. Set the printer power switch to **ON**.
2. From the **Windows Settings** screen, select **Bluetooth & devices > Add device**.
3. Select **Bluetooth**.



4. Select **9442T**.

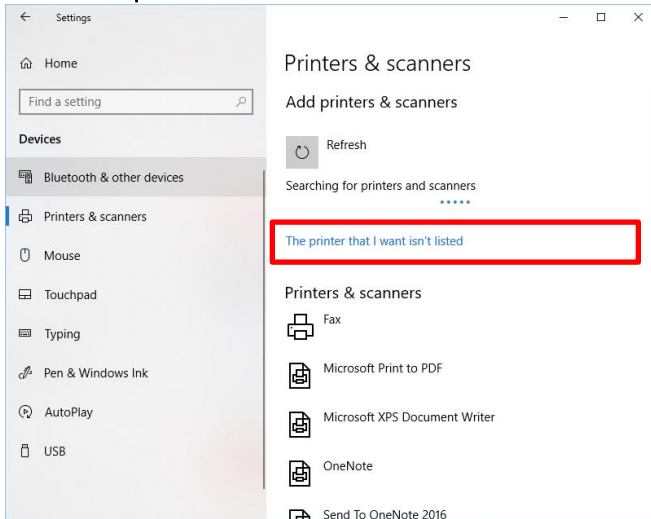


5. Once the printer is paired, press **Done**.

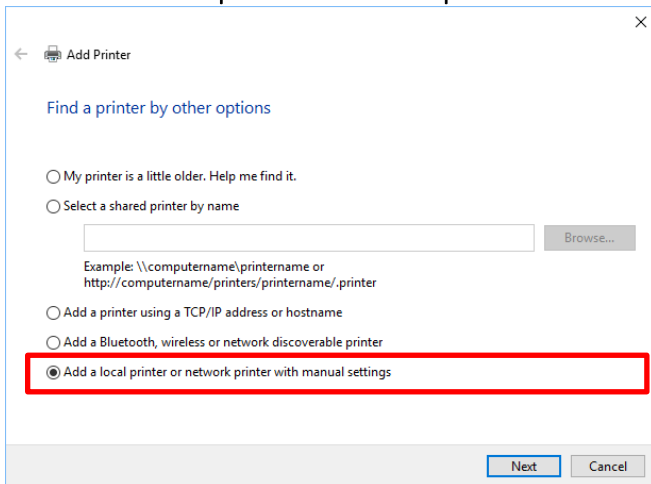
## 2.4 Installing the Printer Drivers

**Note:** On the SteriDate Stand-Alone system, the printers and their drivers come pre-installed.

1. Set the printer power switch to **ON**.
2. From the **Windows Settings** screen, select **Devices > Printers & Scanners > Add a printer or scanner**.
3. Select **The printer that I want wasn't listed**.

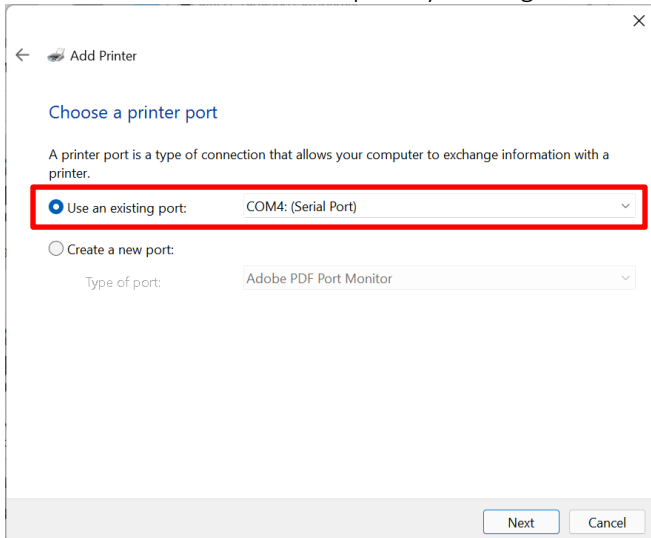


4. Select **Add a local printer or network printer with manual settings**, and then click **Next**.



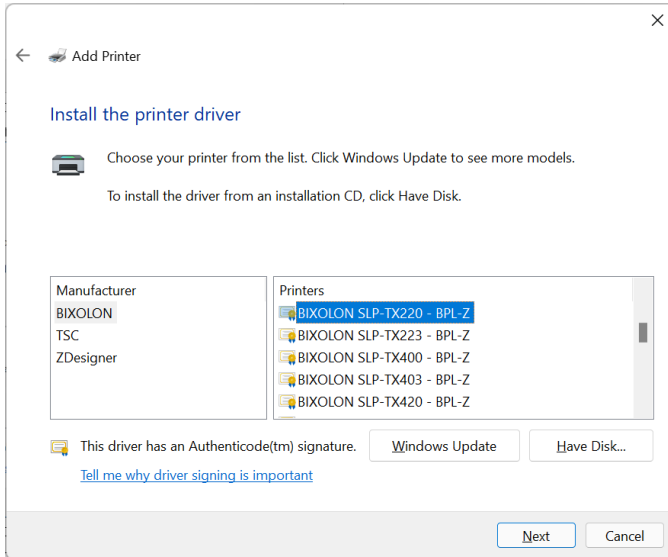
5. On the **Use an existing port** dropdown, select the port, and then click **Next**.

**Note:** You can determine the port by viewing **Printer Properties** in the **Control Panel**.

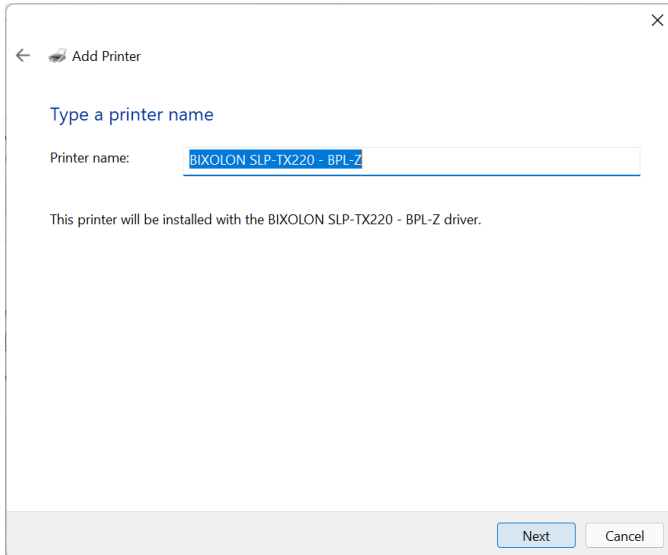


6. Select the printer Manufacturer and Model from the list, then click **Next**.

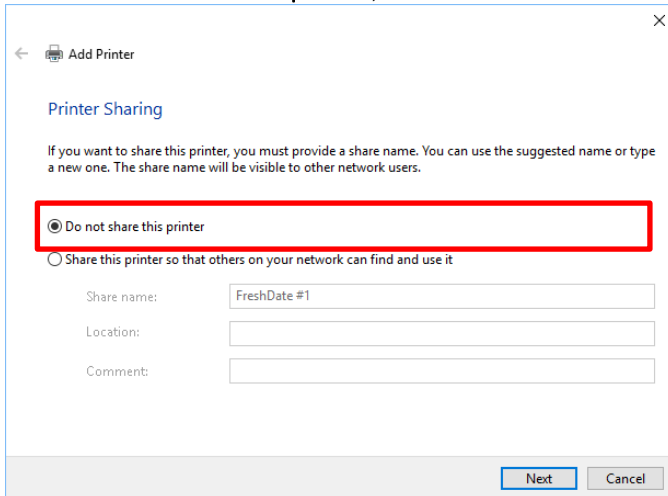
**Note:** Printer drivers can be found in the SteriDate software flash drive.



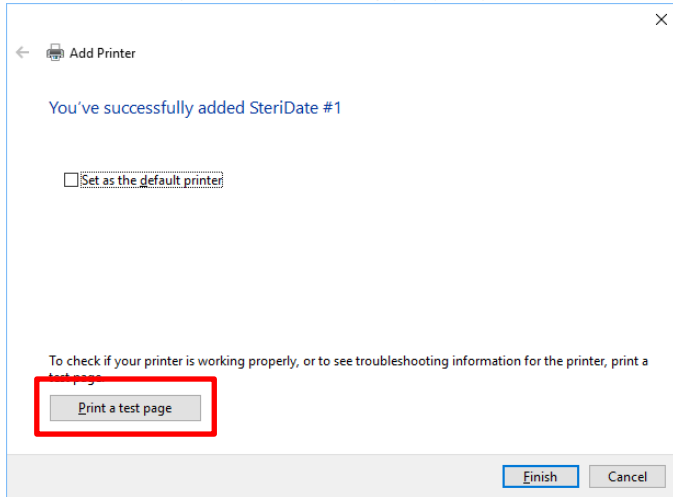
7. Click **Next**.



8. Select **Do not share this printer**, and then click **Next**.



9. To check if the printer is working properly, click **Print a test page**.



10. Click **Finish**.

## 2.5 Installing the SteriDate Software

**Note:** The SteriDate software comes pre-installed on the SteriDate2 Stand-Alone system.

### Grant of License

Use of the SteriDate software implies you agree to be bound by the terms of the **End User License Agreement** presented during the software installation, which include that **for each Software license key that you purchase from MedVantage, you may use the Software on one single Computer.**

### System Requirements

- Windows 7 or higher (64-bit or 32-bit)
- .NET Framework 4.5
- Processor: 1 GHz minimum recommended
- RAM: 1 GB minimum recommended
- Storage: 2 GB minimum recommended
- Display: Touchscreen suggested
- Bluetooth or USB Ports for each SteriDate printer
- Installation: Single .EXE setup. Per-machine (admin rights required)

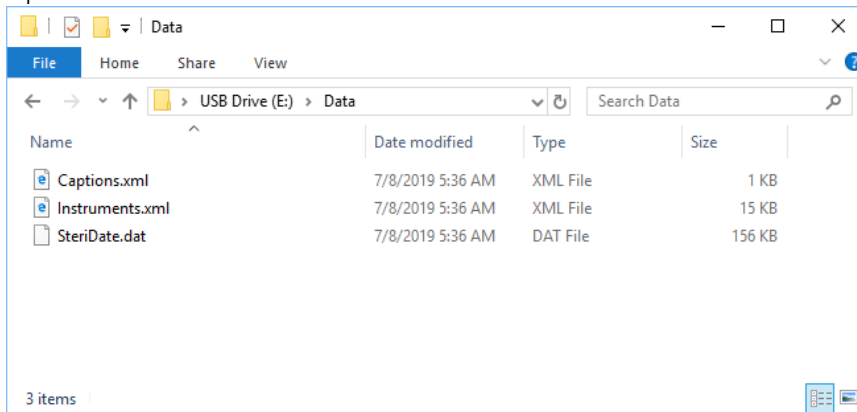
### Starting the Install

1. Open the folder containing the SteriDate software, and then double click on the **SteriDate Setup** file.
2. Check the **I agree to the License terms and conditions** checkbox, and then press **NEXT**.
3. Enter the Serial Key, shown on your Software License in the SteriDate software folder, and press **INSTALL**.
4. Once the installation is complete, press **FINISH**.
5. To start the software, set the power switch on the printer(s) to **ON**, and then restart the terminal or PC.

## 2.6 Installing Data Files

To install any data files preconfigured for you by MedVantage:

1. Open the folder containing the SteriDate software.
2. Open the **Data** folder.



3. Copy all files with a **.dat** and a **.xml** extension, and then paste them into the **C:\ProgramData\SteriDate** folder.

## 2.7 About Users

SteriDate supports two types of users: Administrator and Operator. The system comes with a Default Administrator and a Default Operator.

User	Description	Default User ID	Default Password
Default Administrator	User with access to all areas of application. Controls the application settings and manages Users.	Admin	1234
Default Operator	User with access to operational areas of the application. Prints labels, manages instruments and manages trays.	Oper	abcd

**Note:** We recommend changing the default User IDs and Passwords and/or defining your own users.

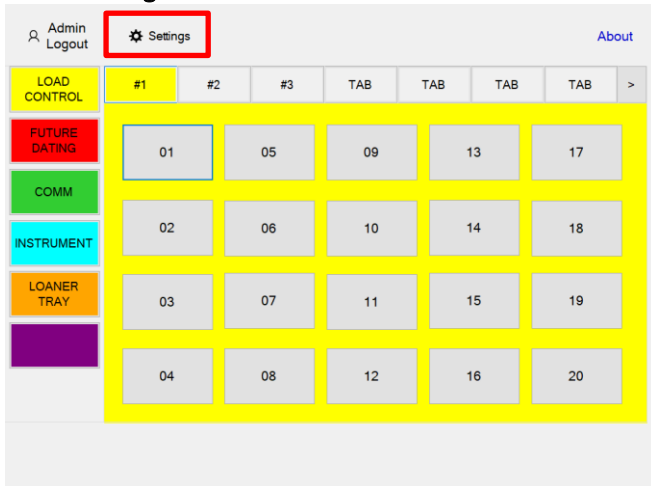
By default, a User ID (not case-sensitive) is required to log-in, and a Password (case-sensitive) is not required. To adjust these as well as the Auto Logout and other settings, see *Adjusting the Settings*.

To manage users and their login credentials as well as create a Users backup file, see *Managing Users*.

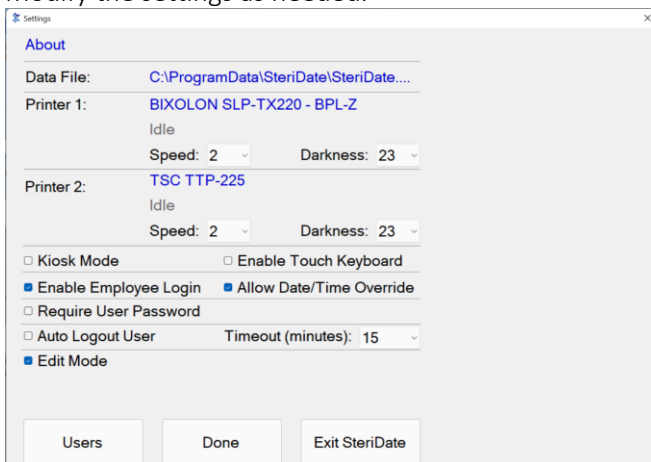
## 2.8 Adjusting the Settings

In Settings you can control the appearance and behavior of the application, printer settings and user options as well as manage users. Administrator log in is required.

1. To log in, press **Login**.
2. Press **Settings**.



3. Modify the settings as needed.



4. To manage users, Press **Users**. See the **Managing Users** section below.
5. To return to the main screen, press **Done** to return to the main screen.
6. To close the application, press **Exit SteriDate**.

**Data File:** The path and name of the SteriDate data file.  
Default: C:\Program Data\SteriDate\SteriDate.dat.

**Printer 1 and Printer 2:** The selected printer and its status (Idle, Offline, Not Installed).

Default Speed: 2

Default Darkness: 23

**Kiosk Mode:** Check to prevent users from exiting the SteriDate application - recommended when using a SteriDate Terminal or Tablet. Uncheck to use SteriDate as a standard desktop application - recommended when using a desktop PC.

Default: Checked

**Enable Touch Keyboard:** Check to enable use of the on-screen touch keyboard - recommended when using a SteriDate Terminal or Tablet. Uncheck to only use an attached keyboard and mouse -recommended when using a desktop PC.

Default: Checked

**Enable Employee Login:** Check to require a User ID to log in.

Default: Checked

**Require User Password:** Check to require a Password to log in.

Default: Unchecked

**Allow Date/Time Override:** Check to allow users to modify dates and times before printing labels.

Default: Unchecked

**Auto Logout Users:** Check to auto-logout users after the selected **Timeout (minutes)** expires.

Default: Unchecked

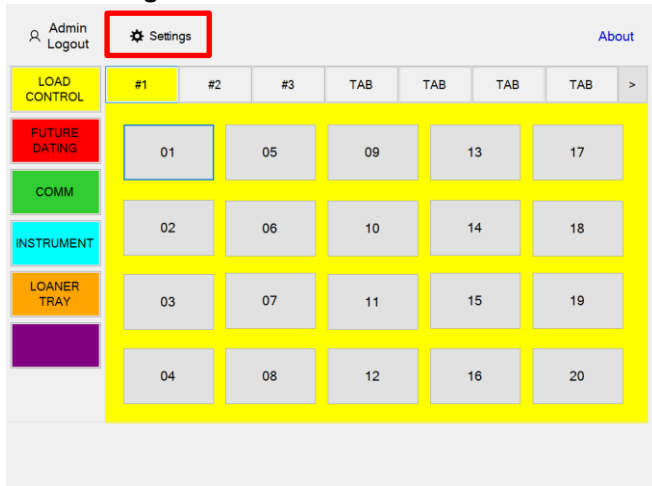
**Edit Mode:** Check to modify Category Settings and create new labels. Uncheck to resume normal Print Mode. The system automatically goes into Edit Mode when an Administrator logs in and resumes Print Mode when the Administrator logs out.

Default: Unchecked

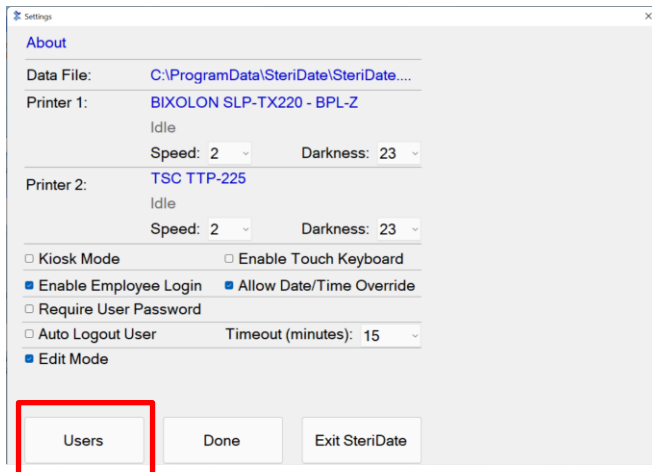
## 2.9 Managing Users

In Users you can manage users and their log in credentials as well as create a Users backup file which you can use to create users on any additional SteriDate systems. Administrator log in is required.

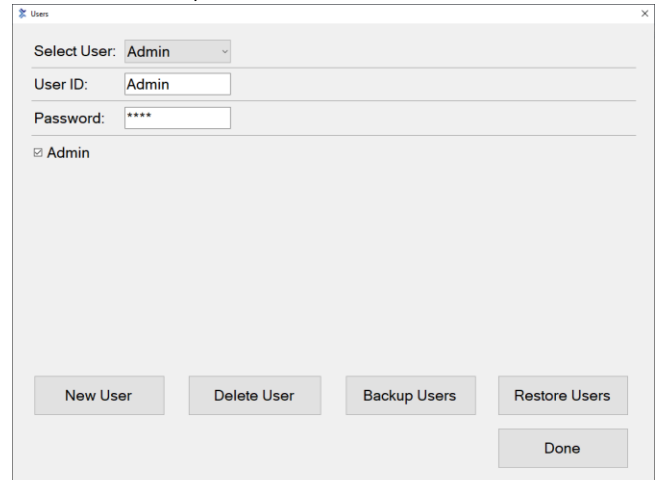
1. To log in, press **Login**.
2. Press **Settings**.



3. Press **Users**.



4. To create a new user, press **New User**, and enter their User ID (max 6 characters). Enter their Password if required to log in (max 12 characters). To assign Administrator rights to the user, check **Admin**. You may have more than one Administrator.



5. To edit a user, select their User ID from the **Select User** drop-down. Any changes are automatically saved.
6. To delete a user, select their User ID from the **Select User** drop-down, then press **Delete User**.
7. To create a Users backup file, select **Backup Users**, select a backup folder, and then press **OK**. The backup file is named UserData.xml.  
**Note:** The Users backup file may be saved to a flash drive or a shared folder and restored to any additional SteriDate systems.
8. To restore from a Users backup file, select **Restore Users**, navigate to the backup folder, select the Users backup file (named UserData.xml by default), and then press **Open**.  
**Note:** This will overwrite all Users with the imported file and cannot be undone.
9. Press **Done**.

## 2.10 Adjusting Category Properties

Category Properties include the text shown on the Category button, Tab Names, label format, and printer (P1 or P2). These properties are saved in the data file, which may have been preconfigured for you by MedVantage. Administrator log in is required.

1. To log in, press **Login**.
2. Press any of the five color-coded **Category** buttons.



3. Modify the settings as needed.

4. Press **Done**.

**Button Caption:** The text shown on the Category button. Prints on some label formats. See the *Label Formats* section.

**Category Mode:** Controls how each Category functions.

- **Buttons:** Select a **Button** to print labels. Use for Load Control w/Load No., Cycle Count, Sequencing, Future Dating and Communication label formats.
- **Tabs:** Select a **Tab** to print labels. Use for Load Control w/Cycle Count.
- **List:** Select items from a list to print labels. Use for Peel Pack and Instrument labeling.

**Group:** Use to organize a list of items in up to 6 different groups. For example, group items by Vendor, Location, or Surgeon.

**Label Format:** The label format number assigned to that Category. See the *Label Formats* section.

**Printer 1 or 2:** The label printer assigned to that Category.

**Heading Style:** Determines how the Header is printed. Only applies to label formats show (*Header*) in their specifications. See the *Label Formats* section.

- **Reverse:** Header prints in reverse, inside a solid black box. (Default)
- **Outline:** Header prints normal, inside an outlined black box.

**Default Label Caption:** Prints on the label if the Label Caption on the Item Properties is blank. Only applies to label formats that use the Label Caption field. See the *Label Formats* section.

**Default Department:** Prints on the label if the Department on the Item Properties is blank. Only applies to the label formats that use the Department field. See the *Label Formats* section.

**Label Message:** Prints on label formats that use the Label Message field. See the *Label Formats* section.

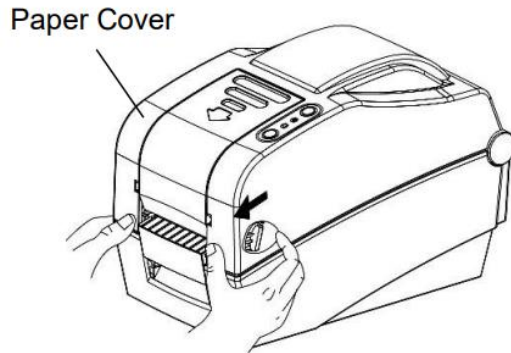
**Tab Names:** The text shown on each Tab. Prints on label formats that use the Tab Name field. See the *Label Formats* section.

**Custom Field Names:** Custom fields you can define. When printing labels, the user will be prompted to enter the data for these fields. Only applies to the label formats that use the Custom Fields. See the *Label Formats* section.

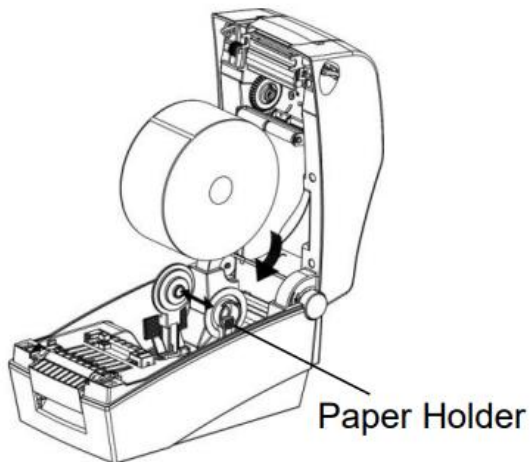
# 3. OPERATION

## 3.1 Loading Labels

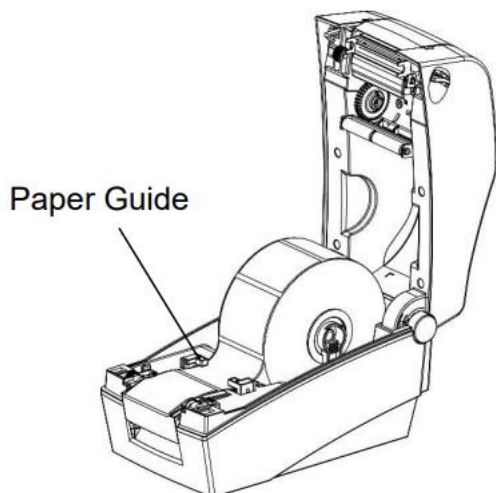
1. Open the paper cover.



2. Spread the Paper Holder and insert paper roll with printing surface facing up.

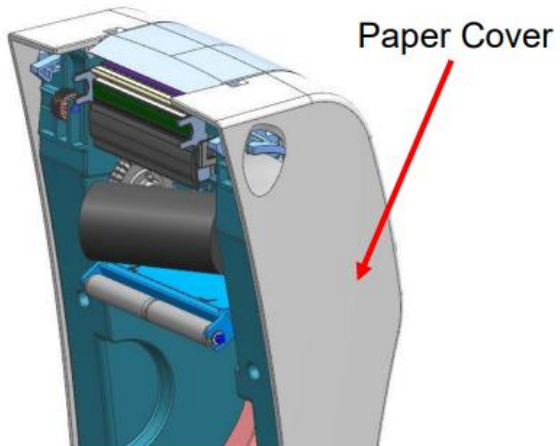


3. Adjust the Paper Guide to the width of the paper.

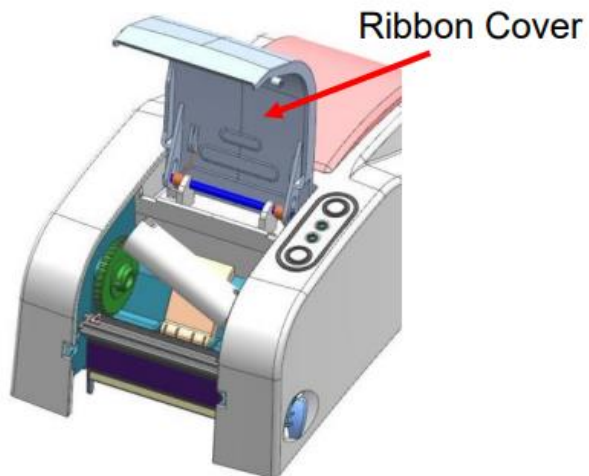


## 3.2 Loading the Ribbon

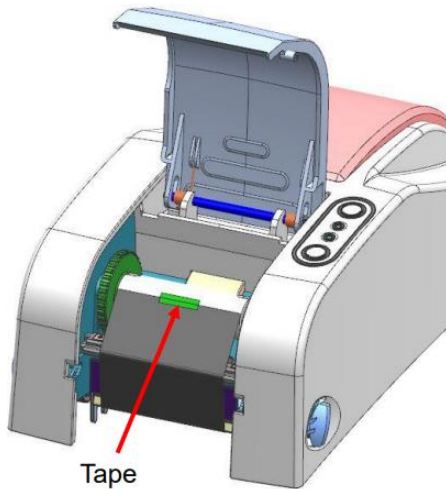
1. Open the Paper Cover and insert the ribbon.



2. Open the Ribbon Cover and insert the core.



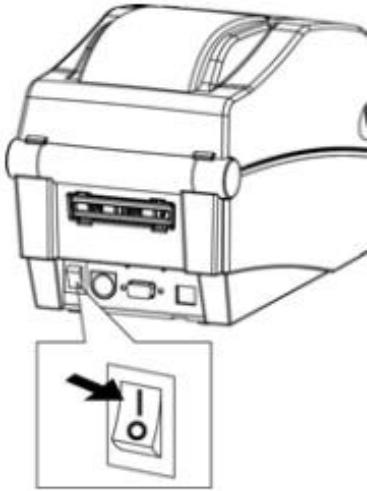
3. Adhere or apply tape to the coiling portion of the ribbon



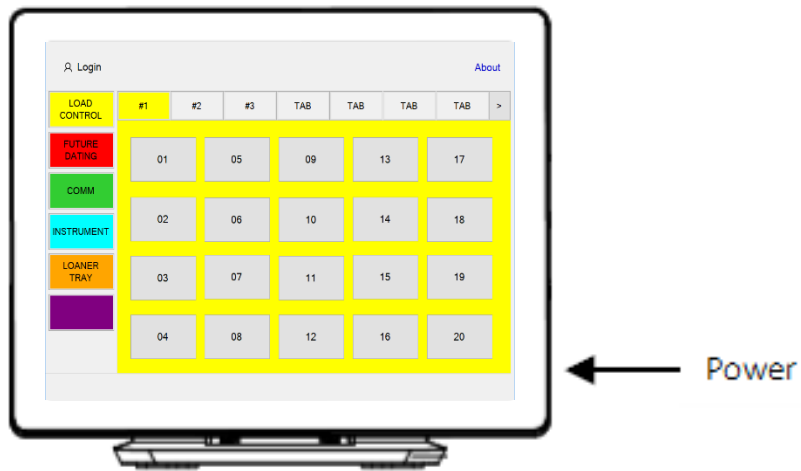
4. Close the Paper Cover until a click sound is heard.
5. Close the Ribbon Cover

## 3.3 Starting the System

1. Set the power switch located on the back of the printer(s) to **ON**.



2. Restart the terminal or PC. On the terminal, the power button is located on the right side of the screen.



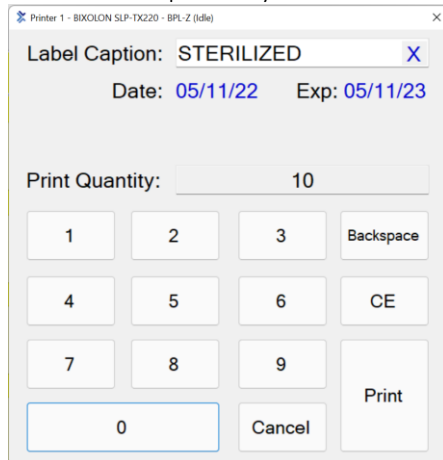
3. Once the terminal starts and the main screen is displayed, the system is ready for use.

## 3.4 Printing Load Labels

1. To log in, press **Login**.
2. Press **Load Control**. Select a sterilizer, and then select a load number.



3. Enter the Label Caption. Begin typing any portion to select from a previously saved list.



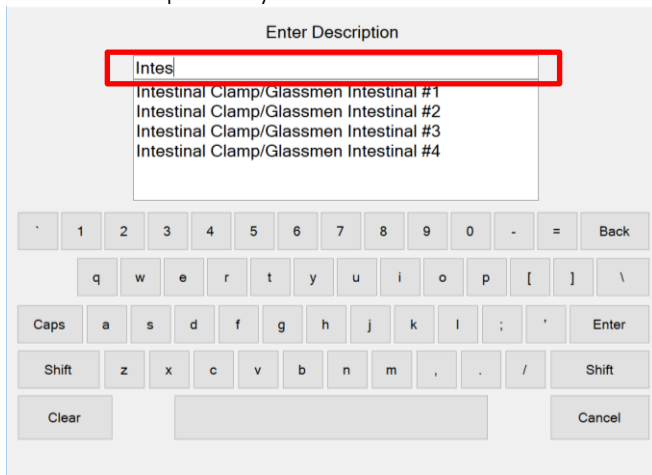
4. Enter the Print Quantity (number of labels to print) and then press **Print**.
5. To log out, press **Logout**.

# 3.5 Printing Instrument Labels

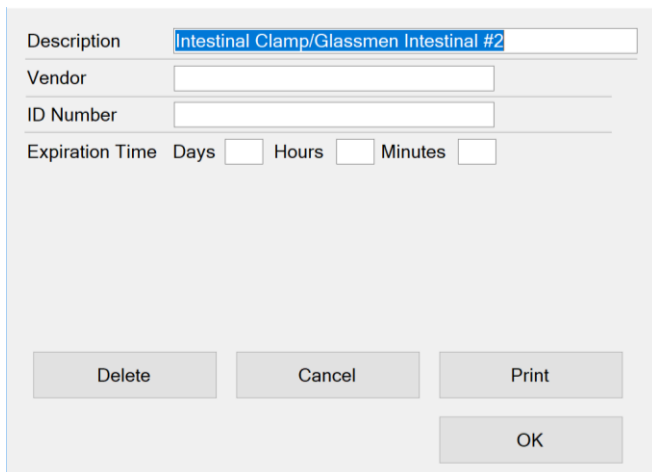
1. To log in, press **Login**.
2. Press **Instrument**.



3. Enter the Description. Begin typing any portion to select from a previously saved list.

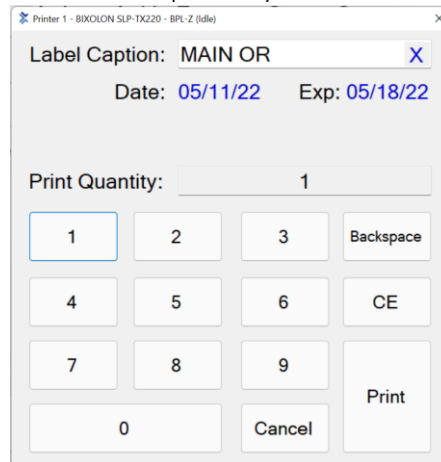


4. Enter or edit the data as needed.



5. Press **Print**.

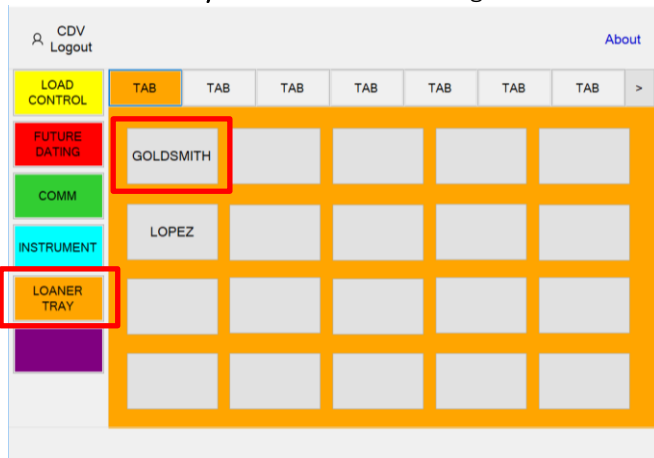
6. Enter the Label Caption. Begin typing any portion to select from a previously saved list.



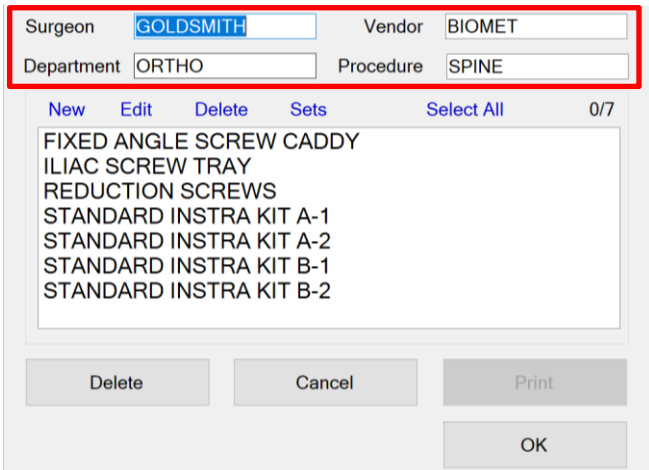
7. Enter the Print Quantity (number of labels to print) and then press **Print**.
8. The Instrument data is saved for later use.
9. To log out, press **Logout**.

## 3.6 Printing Loaner Tray Labels

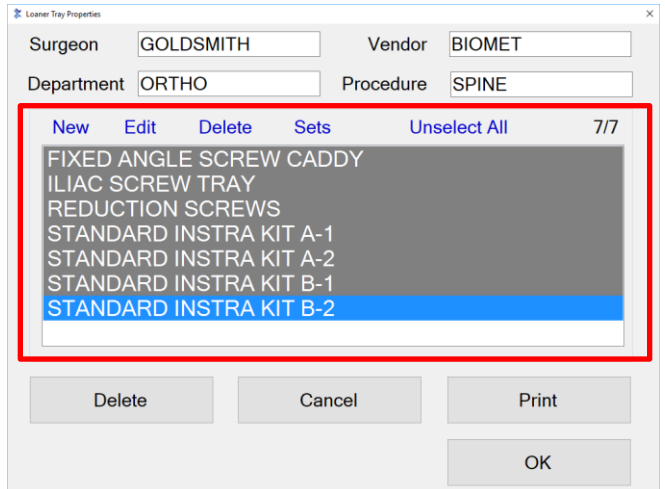
1. To log in, press **Login**.
2. Press **Loaner Tray** and then select a Surgeon.



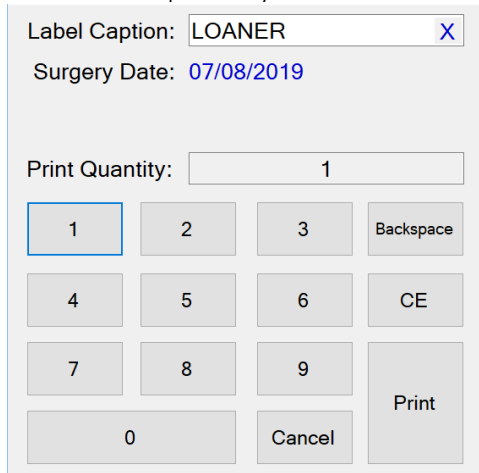
3. Enter the Department, Vendor and Procedure. Begin typing any portion to select from a previously saved list.



4. Select trays from the list or press **New** to create a new tray.
5. To print labels for multiple sets of the same tray, press **Sets**.
6. Press **Print**.



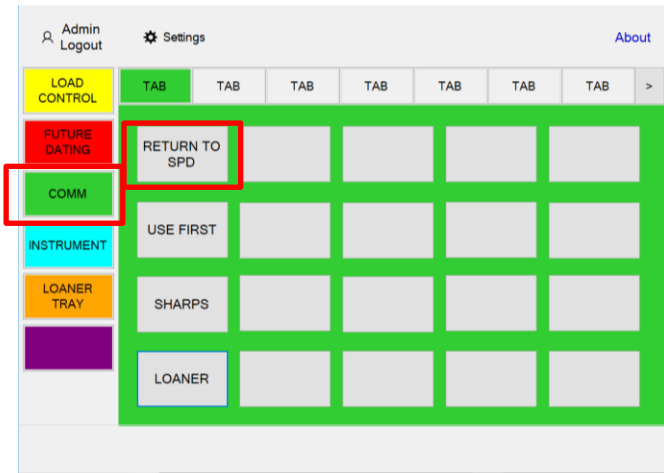
7. Enter the Label Caption. Begin typing any portion to select from a previously saved list.



8. Enter the Print Quantity (number of labels to print) and then press **Print**.

# 3.7 Creating New Labels

1. To log in, press **Login**.
2. Press **Communication** and then select a button.

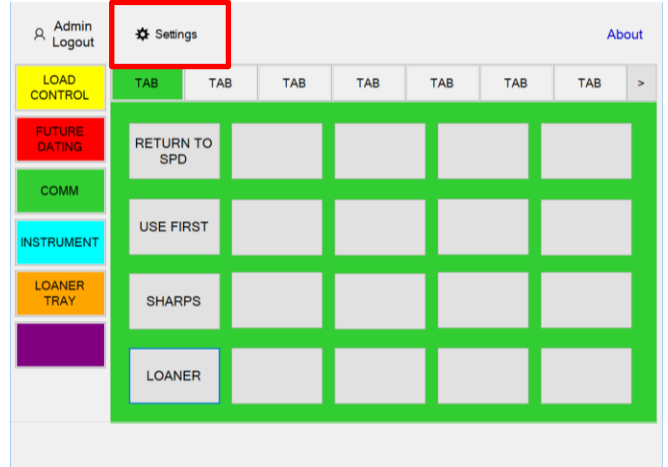


3. Enter the Button Properties and the press **OK**.  
**Note:** This screen may vary depending on the label format you are using.

The 'Button Properties' dialog box contains the following fields and controls:

- Button Caption:** RETURN TO SPD
- Description 1:** RETURN
- Description 2:** TO
- Description 3:** SPD
- Label Caption:** (empty field with a close button 'X')
- Expiration Time:** Days 0, Hours 0, Minutes 0
- Buttons:** Delete, OK, Cancel

4. Press **Settings**.



5. Uncheck **Edit Mode** to resume Print Mode.

The 'Settings' dialog box shows the following configuration:

- About:** Data File: C:\ProgramData\SteriDate\SteriDate...
- Printer 1:** TSC TTP-225, Online, Speed: 2, Darkness: 23
- Printer 2:** TSC TTP-225 (Copy 1), Online, Speed: 2, Darkness: 23
- Options:**
  - Kiosk Mode
  - Enable Touch Keyboard
  - Enable Employee Login
  - Allow Date/Time Override
  - Require User Password
  - Auto Logout User
  - Timeout (minutes): 15
- Buttons:** Users, Done, Exit SteriDate

The 'Edit Mode' checkbox is checked and highlighted with a red box.

6. Press **Done**.

## 4. MAINTENANCE

Printing quality might be degraded by dust, foreign substance, adhesive substance, or other pollution materials stuck in the printer head or inside the printer.

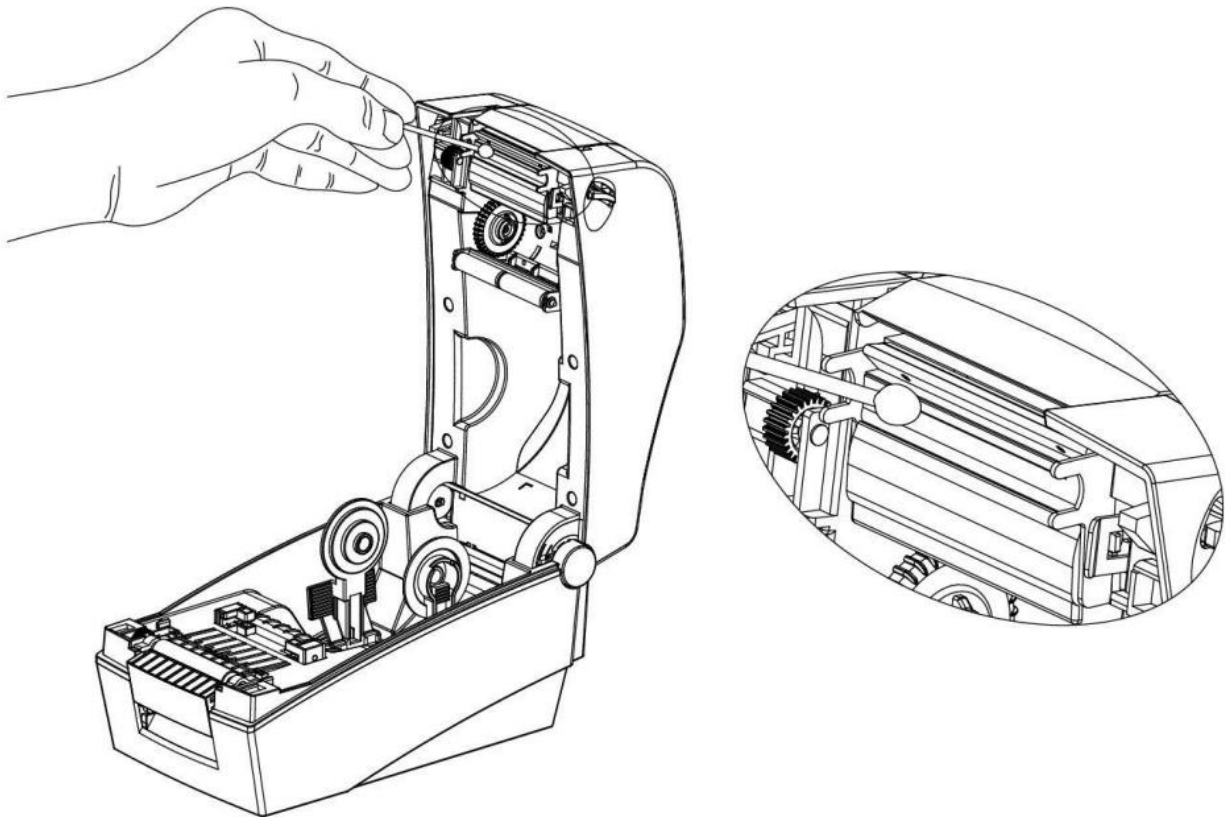
### CAUTION

- Make sure to turn the printer power off prior to cleaning.
- As the print head gets very hot during printing, if intending to clean the print head, turn the printer power off and wait approximately 2~3 minute before commencement.
- When cleaning the print head, take care not to touch the heated portion of the print head. Printer Head is susceptible to damage from static electricity, etc.
- Take care not to allow the print head to become scratched and/or damaged in any way.

### 4.1 Cleaning Head

Perform the cleaning process each time the paper roll is replaced to prevent print quality deterioration.

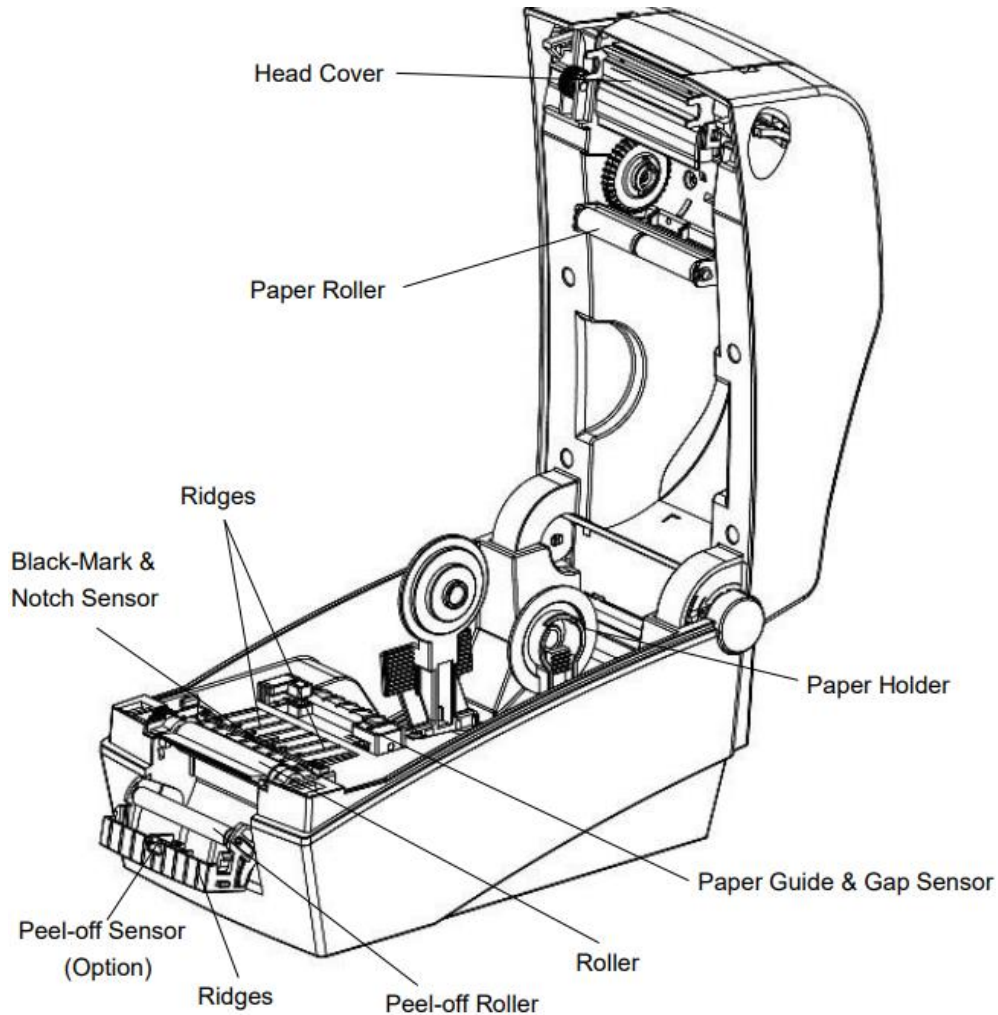
1. Open the paper cover and clean the printhead using the cloth or cotton swab soaked in alcohol for medical.
2. After cleaning the head, do not use the printer until the alcohol used for cleaning evaporates completely (1~2 min) and the printer has completely dried.



## 4.2 Cleaning Sensors, Roller and Paper Path

Clean the parts when there is a degradation of performance in printing quality or paper detection.

1. Open the paper cover and ribbon assembly and remove the paper and ribbon.
2. Remove any dust or foreign substance using dry cloth or cotton swab.
3. Soak the cloth or cotton swab in alcohol for medical use and use it to remove adhesive foreign substances or other pollution materials.
4. After cleaning the parts, do not use the printer until the alcohol evaporates completely (1~2 min) and the printer has completely dried.



## 5. TROUBLESHOOTING

Problem	Symptoms	Recovery
Printer	Not printing.	<ol style="list-style-type: none"> <li>1. Verify the USB cable is connected, or Bluetooth printer is paired, and the printer has power. See <i>Setting Up the Printer(s)</i>.</li> <li>2. Verify the printer is installed and online. See <i>Adjusting the Settings</i>.</li> <li>3. Verify the correct printer and format are selected. See <i>Adjusting Category Properties</i>.</li> <li>4. Restart the system. See <i>Starting the System</i>.</li> </ol>
Printer	Nothing prints on the label.	<ol style="list-style-type: none"> <li>1. Remove any stuck labels.</li> <li>2. Reload the label roll. See <i>Loading Labels</i>.</li> <li>3. Reload the ribbon. See <i>Loading the Ribbon</i>.</li> </ol>
Printer	Skipping or continuous feeding labels.	<ol style="list-style-type: none"> <li>1. Recalibrate the gap sensor. See <i>Media Calibration</i>.</li> </ol>
Printer	Paper jam.	<ol style="list-style-type: none"> <li>1. Remove any stuck labels.</li> <li>2. Reload the label roll. See <i>Loading Labels</i>.</li> <li>3. Reload the ribbon. See <i>Loading the Ribbon</i>.</li> </ol>
Printer	Poor print quality.	<ol style="list-style-type: none"> <li>1. Clean the print head. See <i>Maintenance</i>.</li> <li>2. Reload the label roll. See <i>Loading Labels</i>.</li> <li>3. Reload the ribbon. See <i>Loading the Ribbon</i>.</li> <li>4. Adjust the print speed and darkness. See <i>Adjusting the Settings</i>.</li> </ol>
Tablet	Windows Critical Error: Start Menu and Cortana not working.	<ol style="list-style-type: none"> <li>1. Press <b>Ctrl + Shift + Esc</b> to access Windows Task Manager.</li> <li>2. On the top left corner of the screen click <b>File</b>, and then click on <b>New Task (Run...)</b>.</li> <li>3. Type <b>msconfig</b>.</li> <li>4. On the <b>System Configuration</b> window click the <b>Boot</b> tab.</li> <li>5. Select the <b>Safe boot</b> box and then check the <b>Network</b> option.</li> <li>6. Click <b>Apply</b> and then click <b>Okay</b>.</li> </ol>
Tablet	<ol style="list-style-type: none"> <li>1. Tablet does not turn on or wake from sleep.</li> <li>2. Tablet shows a black screen with no Surface logo.</li> <li>3. Nothing happens when you press the power button.</li> <li>4. The tablet appears to be turned off or in a power-saving state.</li> </ol>	<p><b>Solution 1: Press the power button once</b></p> <ol style="list-style-type: none"> <li>1. Press and release the power button on the top-left side of the tablet.</li> <li>2. <b>Note:</b> The tablet may take a few seconds to start up or wake from sleep and display the Surface logo.</li> <li>3. Place the tablet on the dock to charge the battery.</li> <li>4. <b>Note:</b> Depending on how low the battery is, you may see a battery icon on the screen for 10 to 15 minutes before Windows starts.</li> <li>5. For Surface tablets, see <a href="#">Install Surface and Windows updates</a> on the Windows Surface Support website.</li> </ol> <p><b>Solution 2: Force restart</b></p> <ol style="list-style-type: none"> <li>1. Press and hold the power button on the top-left side of the tablet for 30 seconds to power down the tablet. <b>Note:</b> The screen may flash. Continue to hold down the power button and release it after the full 30 seconds.</li> <li>2. Press and release the power button on the top-left side of the tablet to turn it back on.</li> <li>3. For Surface tablets, see <a href="#">Install Surface and Windows updates</a> on the Windows Surface Support website.</li> </ol>

## 6. MEDIA CALIBRATION

This printer has been designed to recognize the gaps with most print papers, but sometimes it may not recognize the gap and keep feeding paper.

### Smart Media Detection

The printer executes this function when necessary without user input and media configuration can be completed with Smart Media Detection function for most print papers.

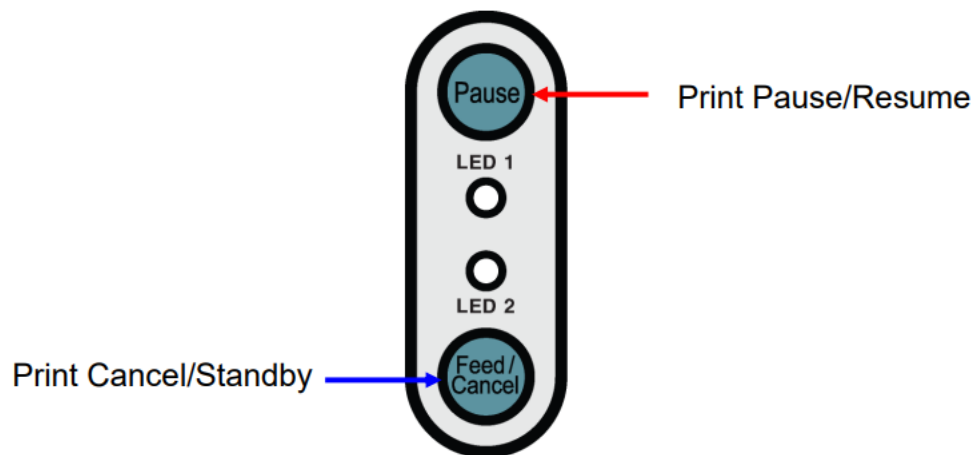
Smart Media Detection function is executed in the following cases:

- When the printer is installed first time, it is executed through Feed button or print command.
- When change paper length is detected during feeding or printing.

3~5 pages of labels will be used depending on the type of paper.

### Gap Sensor Auto Calibration Mode

Use this mode when paper is not detected correctly with Smart Media Detection function.



1. With the printer in Standby Mode, press the Pause button for two seconds (LED 1 is Orange).
2. Once the LED 2 blinks Green four times, press the Feed button.
3. Printer feeds paper and calibrates Gap Sensor automatically.

The printer will enter error mode if paper detection fails after feeding up to 2 meters of paper. Error mode can be released by opening and closing the cover.

Smart Media Detection will be disabled if paper detection is successful in this mode.

# 7. LABEL FORMATS

This section shows all the label formats that are available in the SteriDate System. The table below shows which Applications and Label Formats are included in each of the 3 editions of the SteriDate software.

Software Edition	Applications	Label Formats
Essentials	Load Control Communication	1-10, 25-26 11-14, 24
Advanced	Loaner Tray Peel Pack	15-16 17-22
Complete	Load Control Communication Loaner Tray Peel Pack	1-10, 25-26 11-14, 24 15-16 17-22

For information on where the data comes from for each of the fields that print on each label format, see the *Label Data Sources* section below.

## Format 1 – 1.2” X 1.1”

**Application:** Load Control

**Included with Software Editions:** Essentials, Complete

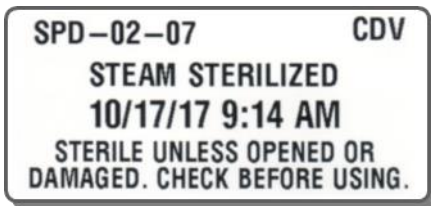


Field	Shown As	Max Print Characters
Sterilizer ID-Load Number	01-04	7
User ID	CDV	6
Label Caption	STERILIZED	10
Today's Date	10/17/17	-
Label Message	STERILE UNLESS...	60

## Format 2 – 2.2” X 1.1”

**Application:** Load Control

**Included with Software Editions:** Essentials, Complete

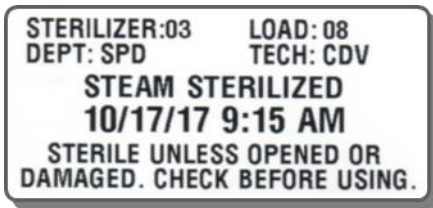


Field	Shown As	Max Print Characters
Department-Sterilizer ID-Load Number	SPD-02-07	16
User ID	CDV	6
Label Caption	STEAM STERILIZED	20
Today's Date & Time	10/17/17 9:14 AM	-
Label Message	STERILE UNLESS...	60

## Format 3 – 2.2” X 1.1”

Application: Load Control

Included with Software Editions: Essentials, Complete



Field	Shown As	Max Print Characters
Sterilizer ID	03	6
Load Number	08	5
Department	SPD	10
User ID	CDV	6
Label Caption	STEAM STERILIZED	20
Today's Date & Time	10/17/17 9:15 AM	-
Label Message	STERILE UNLESS...	60

## Format 4 – 1.2” X 1.1”

Application: Load Control

Included with Software Editions: Essentials, Complete

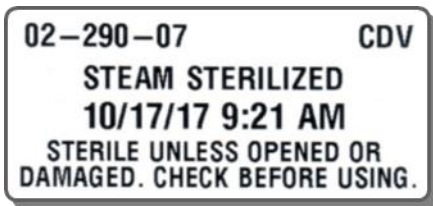


Field	Shown As	Max Print Characters
Sterilizer ID- Julian Date-Load Number	04-290-07	15
User ID	CDV	6
Label Caption	STERILIZED	10
Today's Date	10/17/17	-
Label Message	STERILE UNLESS...	60

## Format 5 – 2.2” X 1.1”

Application: Load Control

Included with Software Editions: Essentials, Complete

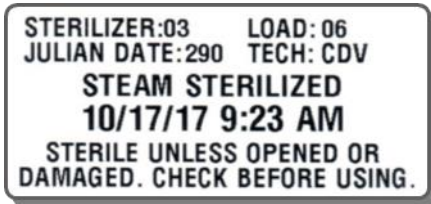


Field	Shown As	Max Print Characters
Sterilizer ID- Julian Date-Load Number	04-290-07	15
User ID	CDV	6
Label Caption	STEAM STERILIZED	20
Today's Date & Time	10/17/17 9:21 AM	-
Label Message	STERILE UNLESS...	50

## Format 6 – 2.2” X 1.1”

Application: Load Control

Included with Software Editions: Essentials, Complete



Field	Shown As	Max Print Characters
Sterilizer ID	03	6
Load Number	06	5
Julian Date	290	3
User ID	CDV	6
Label Caption	STEAM STERILIZED	20
Today's Date & Time	10/17/17 9:23 AM	-
Label Message	STERILE UNLESS...	50

## Format 7 – 1.2” X 1.1”

Application: Load Control

Included with Software Editions: Essentials, Complete



Field	Shown As	Max Print Characters
Sterilizer ID-Load Number	04-07	15
User ID	CDV	6
Label Caption	STERILIZED	10
Today's Date	10/17/17	-
Fixed	EXPIRES	-
Expiration Date	10/17/17	-

## Format 8 – 2.2” X 1.1”

Application: Load Control

Included with Software Editions: Essentials, Complete



Field	Shown As	Max Print Characters
Sterilizer ID	04	6
Load Number	07	5
Department	SPD	10
User ID	CDV	6
Label Caption	STEAM STERILIZED	20
Today's Date & Time	10/17/17 9:28 AM	-
Fixed	EXPIRES	-
Expiration Date & Time	10/17/18 9:28 AM	-

## Format 9 – 1.2” X 1.1”

Application: Load Control

Included with Software Editions: Essentials, Complete



Field	Shown As	Max Print Characters
Cycle Count	12350	5
User ID	Admin	6
Sterilizer ID	NX100-01	10
Today's Date	10/17/17	-
Label Message	STERILE UNLESS...	60

## Format 10 – 2.2” X 1.1”

Application: Load Control

Included with Software Editions: Essentials, Complete

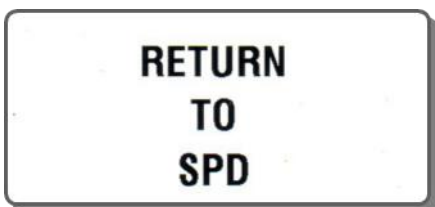


Field	Shown As	Max Print Characters
Sterilizer ID	04	6
Load Number	07	5
Cycle Count	1962	5
User ID	CDV	6
Today's Date & Time	10/17/17 9:44 AM	-
Expiration Date & Time	10/17/18 9:44 AM	-
Label Message	STERILE UNLESS...	50

## Format 11 – 2.2” X 1.1”

Application: Communication

Included with Software Editions: Essentials, Complete



Field	Shown As	Max Print Characters
Description 1	RETURN	15
Description 2	TO	15
Description 3	SPD	15

## Format 12 – 2.2” X 1.1”

Application: Communication

Included with Software Editions: Essentials, Complete



Field	Shown As	Max Print Characters
Description 1	LOANER	15
Description 2	TRAY	15
Description 3	RECEIVED	15
Today's Date & Time	02/27/17 4:47 PM	-
User ID	CD	6

## Format 13 – 2.2” X 1.1”

Application: Communication

Included with Software Editions: Essentials, Complete



Field	Shown As	Max Print Characters
Description 1	EXPIRES ON	15
Expiration Date & Time	10/17/18 9:44 AM	-
Label Caption	RETURN TO SPD	25

## Format 14 – 2.2” X 1.1”

Application: Communication

Included with Software Editions: Essentials, Complete

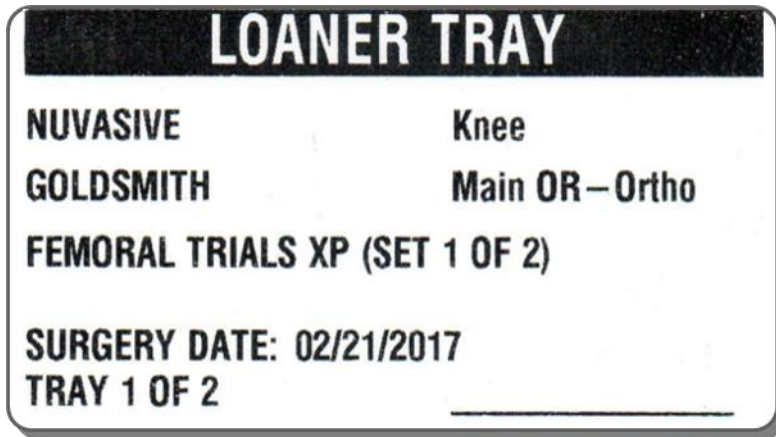


Field	Shown As	Max Print Characters
Description 1	DR. LORENZO	20
Description 2	IMPLANTABLE	20
Sequence Number	SET 01-03	-
Today's Date & Time	02/27/17 4:47 PM	-

## Format 15 – 4.0” X 2.0” & Format 16 – 2.0” X 4.0”

Application: Loaner Tray

Included with Software Editions: Advanced, Complete

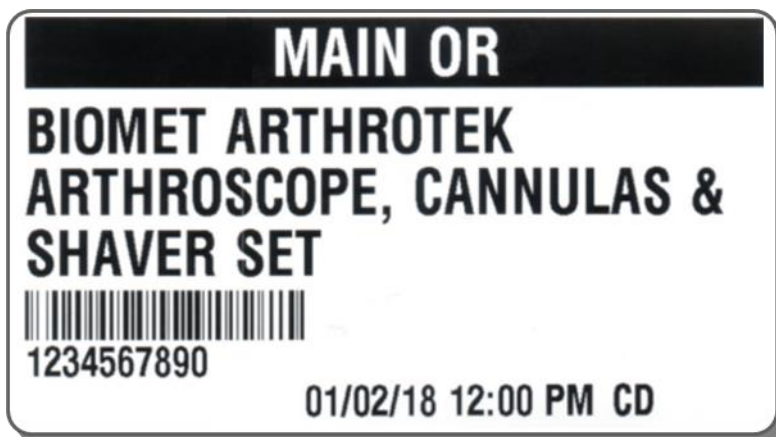


Field	Shown As	Max Print Characters
Label Caption (Header)	LOANER TRAY	20
Vendor	NUVASIVE	20
Procedure	Knee	15
Surgeon	GOLDSMITH	20
Department	Main OR-Ortho	15
Tray Name	FEMORAL TRAILS XP	50
Set Sequence	(SET 1 OF 2)	-
Surgery Date	02/21/2017	-
Tray Sequence	TRAY 1 OF 2	-

## Format 17 – 4.0” X 2.0” & Format 18 – 2.0” X 4.0”

Application: Peel Pack

Included with Software Editions: Advanced, Complete

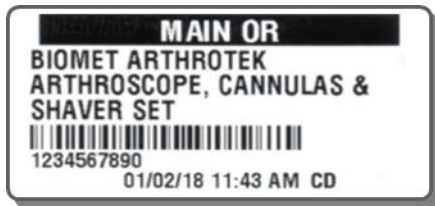


Field	Shown As	Max Print Characters
Label Caption (Header)	MAIN OR	20
Vendor	BIOMET	20
Description	ARTHROTEK ARTHROSCOPE...	50
ID Number	1234567890 (Code 128 Barcode)	20
Today's Date & Time	01/02/18 12:00 PM	-
User ID	CD	6

## Format 19 – 2.2” X 1.1”

Application: Peel Pack

Included with Software Editions: Advanced, Complete



Field	Shown As	Max Print Characters
Label Caption (Header)	MAIN OR	20
Vendor	BIOMET	20
Description	ARTHROTEK ARTHROSCOPE...	50
ID Number	1234567890 (Code 128 Barcode)	15
Today's Date & Time	01/02/18 11:43 AM	-
User ID	CD	6

## Format 20 – 4.0” X 2.0” & Format 21 – 2.0” X 4.0”

Application: Peel Pack

Included with Software Editions: Advanced, Complete

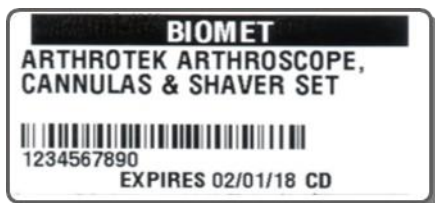


Field	Shown As	Max Print Characters
Vendor (Header)	BIOMET	20
Description	ARTHROTEK ARTHROSCOPE...	70
ID Number	1234567890 (Code 128 Barcode)	20
Expiration Date	02/01/18	-
User ID	CD	6

## Format 22 – 2.2” X 1.1”

Application: Peel Pack

Included with Software Editions: Advanced, Complete

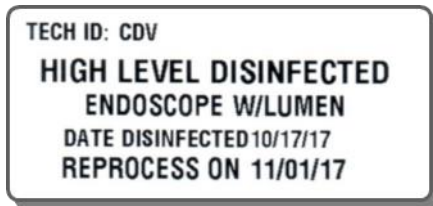


Field	Shown As	Max Print Characters
Vendor (Header)	BIOMET	20
Description	ARTHROTEK ARTHROSCOPE...	70
ID Number	1234567890 (Code 128 Barcode)	15
Expiration Date	02/01/18	-
User ID	CD	6

## Format 23 – 2.2” X 1.1”

Application: Load Control

Included with Software Editions: Essentials, Complete

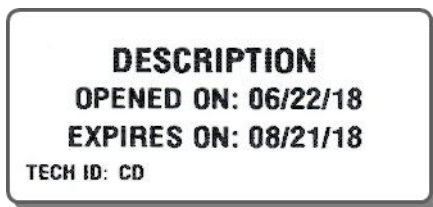


Field	Shown As	Max Print Characters
User ID	CDV	6
Label Caption	HIGH LEVEL DISINFECTED	25
Description	ENDOSCOPE W/LUMEN	30
Fixed	DATE DISINFECTED	-
Today's Date	10/17/17	10
Fixed	REPROCESS ON	-
Expiration Date	11/01/17	10

## Format 24 – 2.2” X 1.1”

Application: Communication

Included with Software Editions: Essentials, Complete

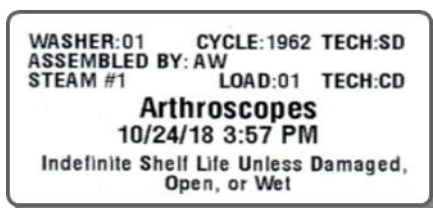


Field	Shown As	Max Print Characters
Description	DESCRIPTION	30
Fixed	OPENED ON:	-
Today's Date	06/22/18	10
Fixed	EXPIRES ON:	-
Expiration Date	08/21/18	10
User ID	CD	6

## Format 25 – 2.2” X 1.1”

Application: Load Control

Included with Software Editions: Essentials, Complete



Field	Shown As	Max Print Characters
Custom 1	WASHER:01	12
Custom 2	CYCLE:1962	10
Custom 3	TECH:SD	8
Custom 4	ASSEMBLED BY:AW	16
Sterilizer ID	STEAM #1	15
Load Number	01	2
User ID	CD	4
Label Caption	Arthroscopes	20
Today's Date & Time	10/24/18 3:57 PM	-
Label Message	Indefinite Shelf Life...	50

# Format 26 – 1.2” X 1.1”

Application: Load Control

Included with Software Editions: Essentials, Complete



Field	Shown As	Max Print Characters
Sterilizer ID	OVEN 01	12
Cycle Count	234	5
User ID	CD	6
Label Caption	STERILIZED	20
Today's Date	07/03/19	-
Fixed	EXPIRES	-
Expiration Date	07/31/19	-

## 8. LABEL DATA SOURCES

The table below shows all the data fields that can be printed on a label and where the data for each of them would come from.

Field	Data Comes From
Custom 1-4	Field Name: Category Properties Data: Custom Data
Cycle Count	The selected Tab. Can be edited on the Print Screen
Department	Load Control Formats: Button Properties Loaner Tray Formats: Loaner Tray Properties If empty, the Default Expiration Time in Category Properties is used.
Description	Instruments: Item Properties
Description 1	Button Properties
Description 2	Button Properties
Description 3	Button Properties
Expiration Date	System Variable. Can be edited on the Print Screen
Expiration Date & Time	System Variable.
Expiration Time in Days, Hours and Minutes	Button Properties. If empty, the Default Expiration Time in Category Properties is used.
Fixed	System Variable
ID Number	Instruments: Item Properties
Julian Date	System Variable
Label Caption	Button Properties. If empty, the Default Label Caption in Category Properties is used.
Label Message	Category Properties
Load Number	Button Properties
Procedure	Loaner Tray Properties
Sequence Number	System Variable
Set Sequence	System Variable
Sterilizer ID	If Category Mode is Buttons, the data comes from Button Properties. If Category Mode is Tabs, the data comes from the Tab Name in the Category Properties.
Surgeon	Loaner Tray Properties
Surgery Date	System Variable. Can be edited on the Print Screen
Today's Date	System Variable. Can be edited on the Print Screen
Today's Date & Time	System Variable
Tray Name	Loaner Tray Properties
Tray Sequence	System Variable
User ID	Login Screen
Vendor	Loaner Tray: Loaner Tray Properties Instruments: Item Properties

# 9. ABOUT STERIDATE LABELS

## Storage Recommendation

Labels should be stored at a temperature of 22°C ±2 and at a relative humidity of 50% ±5. The nearer to these conditions, the better. Further recommendations are as follows:

- Store label rolls horizontally (not vertically), in original packaging, away from direct sunlight
- Rotate stocks so that the oldest labels are used first
- Ensure that winding tension of label roll is not too tight, to prevent adhesive bleed
- Do not hang rolls of labels on pegs, or stack them in such a way that the inner core is distorted
- Repack partly used rolls of labels in their original packaging.

**NOTE:** Storage at too high a temperature may have a detrimental effect on a product's performance. Low temperatures are generally less critical, but thorough subsequent reconditioning is nevertheless important to avoid conversion or dispensing problems.

## Handling

- Remember that label roll cores are at their most vulnerable on the extreme edges. Handle with care.
- Rough handling of label rolls can cause the core and/or edges to become damaged. Eventually, this can lead to breakage on the printer machine.
- Avoid leaving label rolls in areas where they can be damaged by heavy items that could bruise or crush the edges.

## Instructions for Use

- Apply label onto clean, dry, flat surface.
- Press label firmly in place including the edges.

## Print Quality

MedVantage SteriDate labels are tested for print quality. If you experience print quality issues, you may need to reload the labels and ribbon, re-calibrate the gap sensor, or adjust the print speed and darkness settings (for full colored labels, increasing the print darkness may be required). See the *Troubleshooting* section of the SteriDate User Guide.

## Shelf life

MedVantage SteriDate labels include 6-month guarantee on adhesive performance.

## Warranty

All statements, technical information, and recommendations about MedVantage label products are based upon tests believed to be reliable but do not constitute a guarantee or warranty. All MedVantage products are sold with the understanding that PURCHASER has independently determined the suitability of such products for its purposes. MedVantage products are warranted to be free of defects or workmanship for a period 30 days from delivery; after which the customer assumes all responsibility for the product. Any product shown to the satisfaction of MedVantage within the time provided to be so defective shall be replaced without charge or MedVantage may issue credit in such amount as it deems reasonable however, in no event shall MedVantage be responsible for claims beyond the replacement value of the defective product or in any way liable or responsible for consequential or incidental damages.

NO EXPRESS WARRANTIES AND NO IMPLIED WARRANTIES, WHETHER OF MERCHANTABILITY OR FITNESS FOR ANY PARTICULAR USE, OR OTHERWISE, EXCEPT AS SET FORTH ABOVE (WHICH IS MADE EXPRESSLY IN LIEU OF ALL OTHER WARRANTIES) SHALL APPLY TO PRODUCTS SOLD BY MEDVANTAGE. MEDVANTAGE SPECIFICALLY DISCLAIMS AND EXCLUDES ALL OTHER SUCH WARRANTIES. NO WAIVER, ALTERATION, ADDITION OR MODIFICATION OF THE FOREGOING CONDITIONS SHALL BE VALID UNLESS MADE IN WRITING AND SIGNED BY AN EXECUTIVE OFFICER OF MEDVANTAGE.

# 10. TECHNICAL SUPPORT

Exclusively for Customers purchasing SteriDate labels and supplies from MedVantage, the SteriDate Support Program includes:

- Technical support at no charge
- Repair service
- Loaner equipment

We recommend contacting Tech Support as soon as any problem occurs as most of the common issues can be resolved over the phone.

**Live Phone Support: 201-587-9100 x212**  
**Email Support: [support@medvantage.org](mailto:support@medvantage.org)**  
**Monday-Thursday 8:30 AM to 4:30 PM ET**  
**Friday 8:30 AM to 3:00 PM ET**

To help expedite service, we suggest having your MedVantage Account Number available. After diagnosing the issue, we may suggest specific troubleshooting and/or require you send the equipment in for repair service.

## Repair Service

Before sending equipment in for repair, please contact Tech Support to request a Return Authorization Number and shipping instructions.

## Warranty Information

Standard Manufacturer Warranty on SteriDate Terminals is three (3) years and on SteriDate Printers is one (1) year. Parts and labor to correct defects in material and workmanship are provided free of charge. Turn-around time is typically within ten (10) business days but in some cases may take up to thirty (30) days. Thermal Printheads: Six (6) months or one (1) million Inches; whichever occurs first.

**Note:** Only genuine labels and supplies are recommended for use in our products. The warranty does not cover service required due to abuse or the use of non-recommended supplies.

## Service Agreements

Provide additional coverage over the standard Manufacturer's Warranty. Coverage for SteriDate printers includes thermal printheads, normal wear and tear and accidental breakage.

## Loaner Equipment

Based on availability. Cost - \$100 per Incident. Loaner equipment must be returned immediately. An additional fee of \$20 per day will be charged if the Customer does not ship the defective equipment to the Service Department within three (3) business days of receiving the loaner equipment or does not return the loaner equipment within three (3) business days after receiving the repaired equipment.

## Out of Warranty Repairs

Repairs are performed on a time and material basis. The Customer will be informed before any work is performed. If the Customer does not wish the repair to be performed, a \$50 diagnostic service fee will be charged.

## Shipping

The Customer is responsible for inbound shipment and assumes all costs and associated risks. MedVantage is responsible outbound transportation charges, UPS Ground. Higher priority shipment is available at Customer's expense. If the Service Department determines the equipment has no defect or is not under warranty, the Customer shall be responsible also for return shipment.

This program is subject to change without notice.



230 West Passaic Street  
Maywood NJ, 07607

Call 201-587-9100

Email [customerservice@medvantage.org](mailto:customerservice@medvantage.org)

Visit <http://medvantage.org/sterile-processing>